

Clyde S. Scoles



Professional Experience

1985-Present

Director/Fiscal Officer of Main Library, 18 Branches, and Outreach Services

*Management of an operating budget of \$40+ million; circulation of 7 million, a collection of 3 million items, and dedicated staff of 400+. Serve a diverse population of 440,500 with a proactive outreach and bookmobile service program.

*Administered a Capital Program of \$75 million that included a \$40 million Bond Issue passed by 74% as well as local funds of \$45 million. The program renewed, upgraded, expanded and built new facilities in all 19 locations throughout Lucas County, Ohio. \$46 million expansion of Main Library and \$33 million in Branch Library improvements.

*Established the first Ohio public library private Foundation in 1991.

*Secured outside funding grants for a number of library service projects as well as capital improvements with strong collaborations and service partnerships such as "The Jason Program" with Dr. Robert Ballard as well directing extensive and well-trained IT/Marketing initiatives to support the departments of youth, teen, and senior services.

*Direct staff in many staff and public training initiatives for customer service, training, information technology fields, consensus-building skills and goal setting.

1978-1985

Toledo-Lucas County Public Library, Assistant Director

1974-1978

Zanesville Public Library, Director

Education

AMLS	University of Michigan	1972
BS	Ohio State University	1971

MARGARET C. DANZIGER



Professional Experience

1985-Present

Deputy Director, Toledo-Lucas County Public Library, Toledo, Ohio
Administrative Responsibility for 6 administrative positions: Branch Services, Circulation, Information Technology, Marketing, Technical Services, Youth Services.

And 6 Main Departments: Audio Visual, Business-Technology, Children's Library, Humanities, Local History, Popular Library/Teen/Technology

Have organized successful Lucas County property tax levy campaigns in 1987, 1995 (bond issue), 1997, 2003, 2007.

Led TLCPL in two Strategic Plans, 1993-1998, 2001-2005.

Have been key participant in a 10-year capital improvement bond issue which renovated, added to and/or built new at Main Library (\$45m project) and 18 branches (\$1m-\$3m)

1982-85

Business Dept. Manager, Toledo-Lucas County Public Library

1977-82

Technical Services Dept. Cataloger, Toledo-Lucas County Public Library

Professional Memberships:

American Library Association (ALA), Public Library Association (PLA), Ohio Library Council (OLC)

Professional Activities:

PLA Committees: Services to Multicultural Populations, Technology in Public Libraries, Legislation. OLC: Futures Initiative Steering Committee, Standards, NWOHio Chapter Conference Coordinator, OLC Board elected 2006-2008, re-elected 2009-1011. Raised \$75,000 for hardware/software to digitize 100,000 TLCPL historic black and white photos. Won LSTA grant to open public computer lab at Main Library in 1986. Won LSTA grant for videoconferencing hardware/software from Main Library to Kent and Heatherdowns Branches.

Award: Ohio Librarian of the Year 2005

Education: College of Wooster, Wooster, OH
Bowling Green State University, Bowling Green, OH
University of Illinois

B. Music Education
B. Music
M. Library Science

Jeffrey L. Wale



Education Doctorate (Ph.D.), Instructional Technology, Wayne State University (course work completed 2000; did not finish dissertation)
Masters (M.Ed.), Instructional Technology, Wayne State University, 1987
Bachelors (B.S.), Learning Resource Management, Ferris University, 1981
Associates (A.S.), Audiovisual Technology, Oakland Community College, 1978.

- Technical Knowledge / Areas
- Staffing and Program Planning
 - Instructional Systems Design
 - Facility Planning & Design
 - Infrastructure & OSP WANs
 - Data Networks
 - Computer-Based Training
 - Web-casting / Portal Services
 - Project Management
 - Bid Specifications
 - Construction Management
 - AV Systems
 - Distance Learning Classrooms
 - Videoconferencing
 - Microwave / Wireless

Professional Work History

Ohio Public Library Information Network (OPLIN) 2007 – Present
Board Member
State agency charged with the task of providing Broadband/Internet connectivity and subscription databases to all 251 Ohio public library systems.

Toledo-Lucas County Public Library 2006 – Present
Manager, Information Technology
Responsible for library technical operations, website, software development, data networking, security, computer services, media, help desk, and automation services.

Benham 2001 – 2006
Managing Director, ACS Division
In charge of the Advanced Communication Systems Division which was a design/build group specializing in military technology projects -- Command and General Staff College, Information Dominance Center, FBI's mobile command and control center, TRADOC Classroom XXI standard, etc.

Childs Consulting 1987 – 2001
President
Educational technology firm assisting K-12 schools, colleges, and universities plan, engineer, and implement technology installations. Services included educational vision, facility design, engineering, bid specifications, construction management, testing, training, and curriculum integration.

Sinai Hospital 1984 – 1987
Media Services, Technical Specialist
Technical support for voice, video, data, and photography needs.

Charles Oswanski



Education

Bowling Green State University, Bowling Green, Ohio
Spring Arbor College, Spring Arbor, Michigan
Bachelor of Arts degree in Management and Organizational Development
Owens Community College, Perrysburg, Ohio
Course work in Applied Industrial Technologies

Professional Experience

1988-Present

Superintendent, Facilities and Operations, Toledo-Lucas County Public Library, Toledo, Ohio
Administrative responsibility, 19 facility locations, all property operations and a staff of 45.
Recently concluded a 10-year capital improvements effort involving \$90 million for renovation and new construction of facilities at 20 locations with a high emphasis on public technology.

1978-1988

Superintendent, Gene Glick Management Corporation, Indianapolis, Indiana.
A national property management company with over 120 property locations. In charge of all Toledo area properties, construction, purchasing and crew programs. Budgetary consulting at many out-of-state locations.

1974-1978

Positions with Waldorf Astoria Hotel, New York, New York and St. Luke's Hospital, Maumee, Ohio related to facilities systems.

Professional Organizations

International Facility Management Association
Ohio Public Facilities Management Association
Building Owners and Managers Association
State Board of Governors
Toledo Parking Authority
Board Trustee

Volunteer Community Activities

President, School Advisory Council, Chairman Church Festival, Schools Endowment Committee, Bishop's Educational Council/Technology, Ohio Parking Authority Founders Committee

References available on request

Nancy Marie Foth



Education

Master of Organizational Leadership, Lourdes College, Sylvania, Ohio

Master of Library Science, University of Wisconsin-Madison

Bachelor of Arts, English, University of Wisconsin-Madison

Experience

Manager of Branch Services, Toledo Lucas County Public Library, 1991 – present.

Coordinator, Adult Services/ Main Library Manager, Toledo Lucas County Public Library, 1987 – 1991

Manager, Sylvania Branch Library, Toledo Lucas County Public Library, 1984 - 1987

Director, Ludlow Memorial Library, Monroe Wisconsin, 1979 – 1984

Children's Librarian, Monona Public Library, Monona, Wisconsin, 1977- 1979.

Skills

- Professional leadership in the planning, deliver and evaluation of operations in library branches and outreach services.
- Development of staff, outreach, collections and other library programs.
- Development of policies and standards regarding the nature and scope of print and non print collections.
- Interview, selection, and training of candidates for professional public service positions in branches.
- Plan and coordinate branch renovation and building projects with emphasis on appropriate public service, technology, collection and staff work spaces
- Completed 16 projects (1996 – 2009) including 11 renovations and addition and 5 new buildings
- Community outreach, grant and project coordination.

Professional Organizations

American Library Association

Public Library Association

Ohio Library Council

Faith A. Hairston

1642 Avondale ♦ Toledo, OH 43607 ♦ 419-270-0644 ♦ faith.hairston@toledolibrary.org

Summary

Diversified experience in Public Library Service, Operations and Sales. People person who is creative, results oriented and a self-motivated professional. Willing to work flexible schedule and travel.

Skills

- ♦ Computer Savvy
- ♦ Project Management
- ♦ GSA Contractor
- ♦ Team Builder
- ♦ Customer Service
- ♦ Diversity Advocate
- ♦ Communication Skills
- ♦ Attentive to Details

Professional Experience

TOLEDO LUCAS COUNTY PUBLIC LIBRARY 10/2000 – Current

Library Manager: Kent Branch and Lagrange Branch

- ♦ Manage daily operations of the branch.
- ♦ Prepare reports and evaluations.
- ♦ Design and present a series of computer classes on Microsoft software applications.
- ♦ Manager during capital improvement project for new building construction and relocation.
- ♦ Active member of community boards.

INTEGRATED STEEL INCORPORATED

03/1995 – 12/1997

Purchasing Agent

- ♦ Procured multiple grades of steel for primary use in the automotive industry.
- ♦ Streamlined procedures using spreadsheet applications resulting in higher efficiency and cost savings.

HERMAN MILLER INCORPORATED

Allocation Specialist , Customer Service Representative 10/1983 - 03/1995

Sales Representative 01/1998 - 07/1998

- ♦ Ensured the timely delivery of customer orders from manufacturing facilities and vendors.
- ♦ Managed HMI dealership accounts in excess of \$6 million in sales
- ♦ GSA Contractor, worked in compliance with GSA specifications.
- ♦ Design consultant and retail salesperson for HMI commercial furniture.

Education

BS: College of Business Admin., Bowling Green State University, Bowling Green, OH

MLIS: College of Library & Information Science, Wayne State University, Detroit, MI

Professional Organizations

American Library Association, Black Caucus of the American Library Association, Ohio Library

Association, Toledo Area Librarians Association

Patricia Nigro



Profile

- Directly involved in developing, implementing and supervising programs and collections of interest to: the older adult, patrons who are homebound, those who are incarcerated and the underserved.
- Oversee two Bookmobile operations by determining routes, staffing, scheduling and makes necessary adjustments.
- Places a strong emphasis in the areas of partnerships, marketing and outreach to those who are underserved within Lucas County.
- Develops and maintains collaborative and cooperative relations with organizations, community agencies, officials, groups and individuals interested in developing programs and services for older adults, homebound patrons and those who reside in correctional facilities.
- Coordinate materials for patrons with special needs throughout the system and consults and advises library public services staff on the background, trends, and needs of the underserved patrons.
- Organize special outside programming projects.
- Increased circulation steadily since being named manager including 20% in 2009.

Experience

<i>Toledo-Lucas County Public Library Manager of Outreach Services</i>	<i>Toledo OH</i>	<i>2003 - present</i>
<i>Toledo-Lucas County Public Library Assistant Manager/Supervisor Specialist at West Toledo, Sanger, Reynolds Corners Branches</i>	<i>Toledo OH</i>	<i>2001 - 2003</i>
<i>Toledo-Lucas County Public Library Assistant Coordinator of Marketing</i>	<i>Toledo OH</i>	<i>1996 - 2001</i>

Education

<i>Kent State University Master of Library & Information Science: 2006</i>	<i>Kent OH</i>
<i>University of Toledo BA Literature/History: 1979</i>	<i>Toledo OH</i>

Roger A. Veitch



Education

Master of Business Administration – University of North Florida, Jacksonville, Florida
Bachelor of Business Administration – University of North Florida, Jacksonville, Florida

Professional Accreditations

Certified Public Accountant (inactive) – Ohio and Florida

Experience

Business Manager, Toledo Lucas County Public Library, 2006 – present
Assistant Business Manager, Toledo Lucas County Public Library, 1995 – 2006
Accounting Manager, Ambrosia, Inc., Swanton, Ohio, 1989 – 1995
Self-Employed Business Consultant, Toledo, Ohio, 1988 – 1989
Staff Accountant, Bock, Korsnack, and Hines, Holland, Ohio, 1986 – 1988
Coffee Plant Manager, Great Atlantic & Pacific Tea Co., Jacksonville, FL, 1980 – 1986
Plant Supervisor, Great Atlantic & Pacific Tea Co., Toledo, Ohio, 1978 – 1980

Abilities

Thorough knowledge of generally accepted accounting principles applicable to private and governmental enterprises

Demonstrated knowledge of state audit requirements, financial planning, budget adaptation and analysis, record keeping, investment of funds

Possession of analytical and problem solving skills in resolving complex budgeting and financial issues

Ability to comprehend complex statistical data and financial reports, and effectively communicate the results to all levels of Library staff and the board of Trustees

Kent Buehrer, AIA

■ kent@buehrergroup.com

Summary

I have been involved in the design of more than 100 renovation projects including a wide variety of publicly funded project. I have been responsible for coordinating the structural, electrical, lighting, technology, and data communications designs for all Buehrer Group projects.

Professional Experience

BUEHRER GROUP ARCHITECTURE & ENGINEERING, INC. 01/2002 – Current

President/Project Manager/Electrical Engineer/Architect

- ◆ Serve as Project Manager for approximately 50 percent of all projects the firm is involved in, including all library projects
- ◆ Responsible for the electrical engineering on all projects the firm has designed

BUEHRER GROUP ARCHITECTURE & ENGINEERING 02/1989 – 12/2001

Electrical Engineer/Architect

- ◆ Responsible for the electrical engineering on all projects the firm has designed.
- ◆ Served as Project Architect on several small additions

Education

B.S. Ocean Engineering; Texas A&M University, May 1985

B.S. Electrical Engineering; University of Wisconsin, December 1988

Professional Credentials

RCDD, 2008

LEED AP, 2006

Ohio Registered Architect, 1995

Ohio Registered Professional Engineer, 1990

Affiliations

American Institute of Architects since 1995

National Society of Professional Engineers Since 1986; Fellow 2008

Ohio Society of Professional Engineers; Past President; Young Engineer of the Year 1999

Toledo Society of Professional Engineers; Past President; Young Engineer of the Year 1998

American Concrete Institute since 1990

Illuminating Engineering Society since 1989

Institute of Electrical and Electronics Engineers since 1989

Experience

Bowling Green State University; Regional Book Depository

Toledo-Lucas County Public Libraries; Facility Assessment

Toledo-Lucas County Public Libraries; Main Branch Library Teen Area Renovation

Toledo-Lucas County Public Libraries; Maumee Branch Library Expansion and Renovation

Toledo-Lucas County Public Libraries; Reynolds Corners Branch Library Addition and Renovation

Toledo-Lucas County Public Libraries; Waterville Branch Library Expansion

University of Toledo; Carlson Library Rathbun Cove Learning Enhancement Center Renovation

Edward Glowacki, AIA

■ ed@buehrergroup.com

Summary

I am a senior staff member who has played a roll in designing both new structures and the renovation of existing facilities. I have a particular interest in compatible design solutions, where additions can be introduced to existing structures that are harmonious and respectful of the original design intent. I have served as Project Architect for a number of projects including Maumee Branch Library, Waterville Branch Library and Reynolds Corners Branch Library.

Professional Experience

BUEHRER GROUP ARCHITECTURE & ENGINEERING, INC. 01/2002 – Current

Partner/Project Architect

- ◆ Serves as Project Architect for a number of building types from 17 million dollar educational facilities, to public libraries, churches, office buildings and village clock towers
- ◆ Responsible for the development of the initial program, the overall design concepts through construction documents, client relation and the creation of presentation renderings

BUEHRER GROUP ARCHITECTURE & ENGINEERING 01/1990 – 12/2001

Partner/Project Architect

- ◆ Serves as Project Architect for a number of building types from 17 million dollar educational facilities, to public libraries, churches, office buildings and village clock towers
- ◆ Responsible for the development of the initial program, the overall design concepts through construction documents, client relation and the creation of presentation renderings

ROONEY AND CLINGER ARCHITECTS 09/1988 – 11/1989

Production Architect

- ◆ Served as Production Architect and assisted in the design and development of building schemes and contract documents.
- ◆ Responsibilities also included on-site construction observation during crucial times in the construction process

BAUER STARK AND LESHBROOK, INC. 08/1980 – 09/1988

Design Team

- ◆ Served as a member of the design team for Ohio's oldest architectural firm
- ◆ Responsibilities included schematic design concepts and presentation drawings

Education

Master of Architecture: Miami University, May 1980

Bachelor of Environmental Design: Miami University, May 1978

Associate of Engineering Technology: University of Toledo, 1975

Professional Credentials

LEED AP, 2008

Ohio Registered Architect, 1986

Affiliations

American Institute of Architects since 1981; Past President 2002 Toledo Chapter

Edward Glowacki, AIA

■ ed@buehrergrgroup.com

Toledo City Historic District Commission; Commissioner

Experience

Bowling Green State University; Regional Book Depository

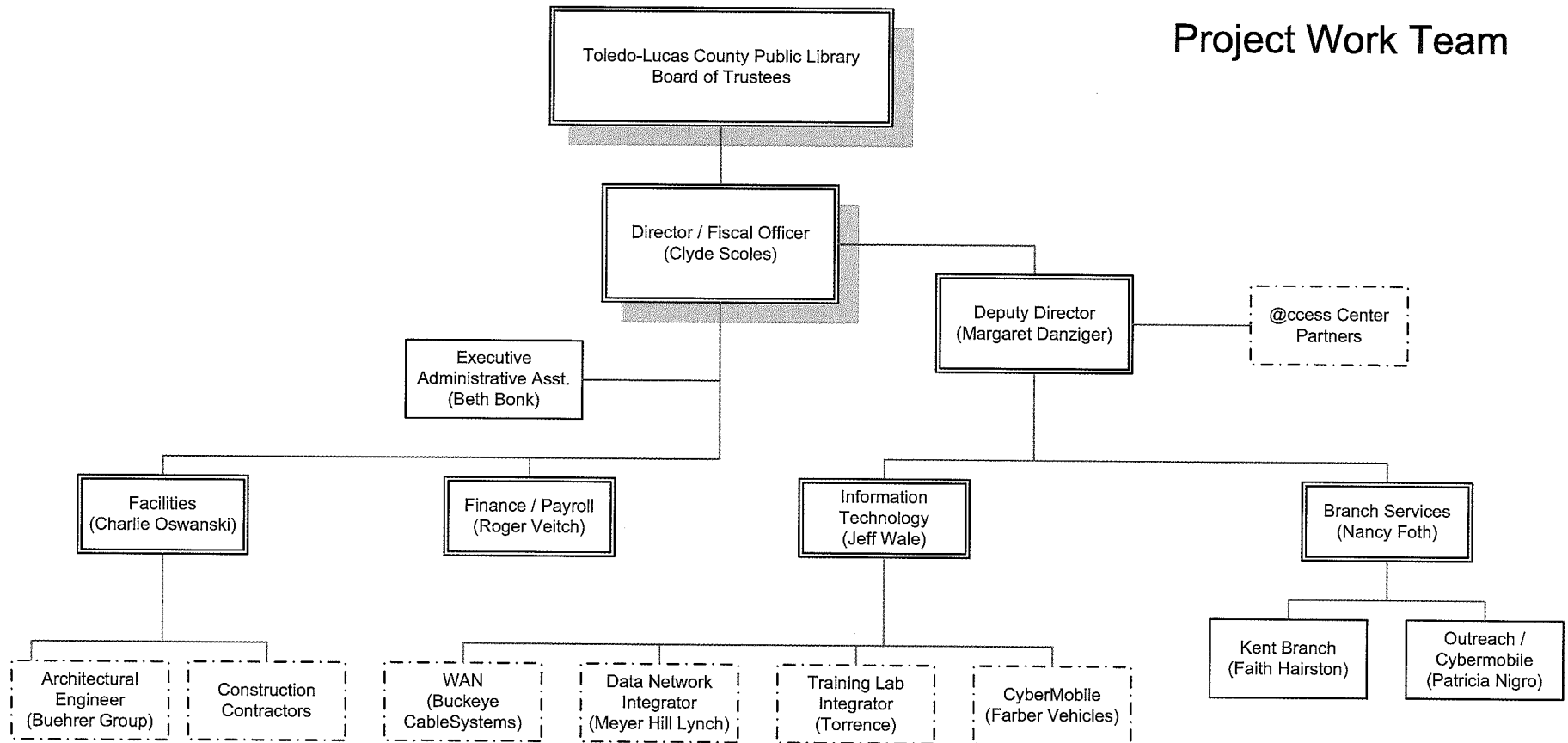
Toledo-Lucas County Public Libraries; Facility Assessment

Toledo-Lucas County Public Libraries; Maumee Branch Library Expansion

Toledo-Lucas County Public Libraries; Reynolds Corners Branch Library Addition and Renovation

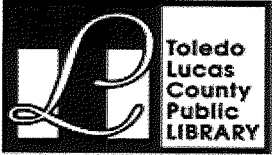
Toledo-Lucas County Public Libraries; Waterville Branch Library Expansion

Project Work Team

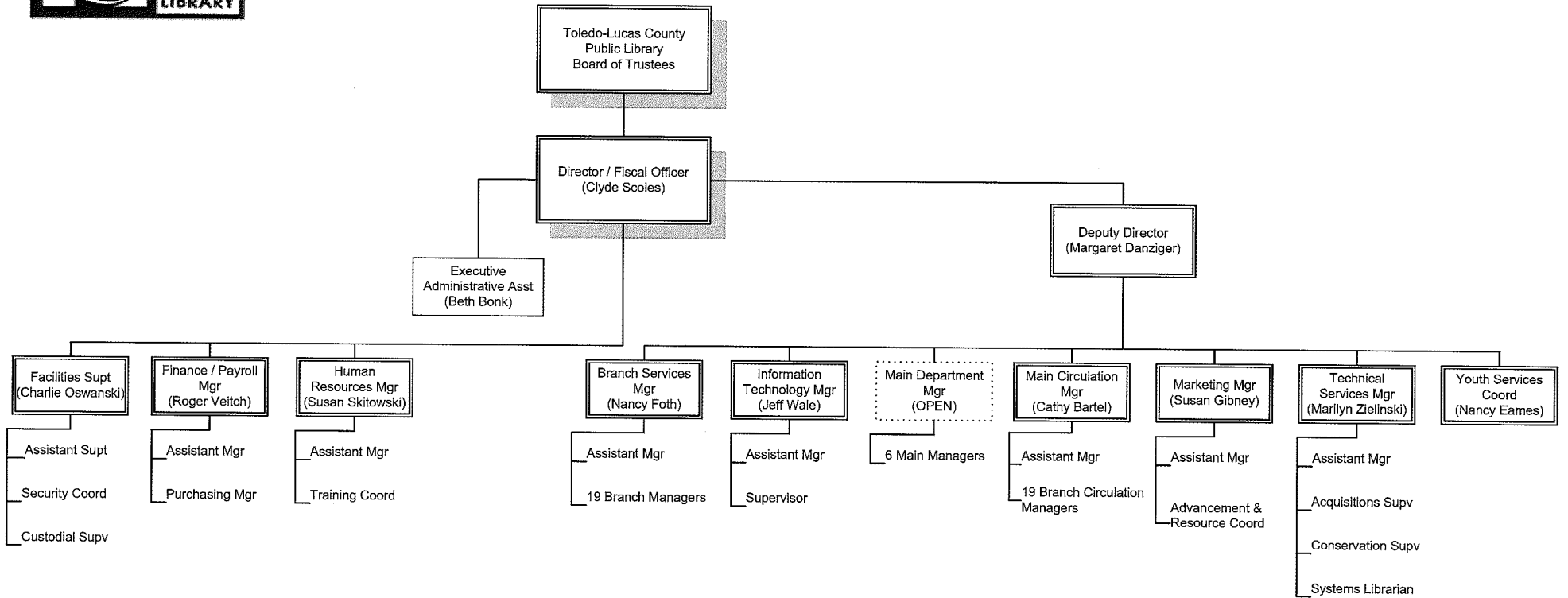


@ccess Center Partners

- Ability Center of Greater Toledo
- Advocates for Basic Legal Equality
- Advanced Roofing
- Alpha Kappa Alpha
- The Andersons
- Area Office on Aging
- Assets Toledo
- Association of Professional Library Employees
- Barron's Lawn Service
- Bowling Green State University
- Brooks Insurance
- Buckeye CableSystem
- City of Toledo
- Communication Workers of America
- Continental Security
- Davis College
- Delta Sigma Theta
- East Toledo Family Center
- Economic Opportunity Planning Assn.
- Fifth Third Bank
- Friendly Center
- Congresswomen Marcy Kaptur
- Key Bank
- Library Design
- Library Legacy Foundation
- Lourdes College
- Lucas County Commissioners
- Lucas County Educational Services
- Lucas County TASC
- Lucas County Workforce Development Agency
- Lucas Metropolitan Housing Authority
- Mercy College of Northwest Ohio
- Neighborhood Health Assn.
- Northwest Ohio Development Agency
- Ohio Library Council
- Ohio Public Library Information Network
- Old West End Academy
- Owens Community College
- ProMedica Health System
- Read for Literacy
- St. Luke's Hospital
- Sight Center of Northwest Ohio
- Teamsters, Chauffeurs, Warehousemen Local Union
- Toledo Area AFL/CIO
- Toledo Museum of Art
- Toledo Regional Chamber of Commerce
- Toledo Regional Growth Partnership
- Toledo Zoo
- Torrence Sound
- United Auto Workers Local
- United Labor Committee
- University of Toledo
- WGTE Channel 30
- WTOL Channel 11
- WTVG Chanel 13



Toledo-Lucas County Public Library 2010 Organizational Chart



Toledo-Lucas County Public Library
 Changes in Net Assets & INCOME STATEMENTS
 Last Six Years
 (Accrual Basis of Accounting)

	2008	2007	2006	2005
<u>Expenses</u>				
<u>Governmental Activities</u>				
<u>Public Services</u>				
General Public Services	\$25,326,064	\$24,501,462	\$23,462,115	\$22,648,900
Purchased and Contracted Services	6,981,379	6,527,428	5,908,558	6,627,638
Library Materials and Information	4,872,702	4,629,134	4,042,157	3,643,535
Intergovernmental	0	0	797,023	3,839,954
Interest and Fiscal Charges	3,030	4,385	35,237	62,768
Total Governmental Activities Expenses	37,183,175	35,662,409	34,245,090	36,822,795
<u>Program Revenues</u>				
<u>Governmental Activities</u>				
<u>Charges for Services</u>				
General Public Services	910,169	957,701	814,533	871,678
Operating Grants, Contributions, and Interest	43,084	92,070	100,120	13,408
Capital Grants and Contributions	0	0	0	147,099
Total Governmental Activities Program Revenues	953,253	1,049,771	914,653	1,032,185
Net Expense	(36,229,922)	(34,612,638)	(33,330,437)	(35,790,610)
<u>General Revenues and Other Changes in Net Assets</u>				
<u>Governmental Activities</u>				
Property Taxes Levied for General Purposes	15,800,391	12,683,803	13,508,739	11,880,772
Property Taxes Levied for Library Construction	0	0	711,866	3,463,189
Property Taxes Levied for Building and Repair	0	0	569,332	0
Grants and Entitlements not Restricted to Specific Programs	21,000,727	21,146,308	20,992,306	19,553,651
Interest	244,555	534,221	491,228	261,328
Gifts and Donations	49,802	72,436	115,890	104,250
Miscellaneous	151,739	220,275	366,870	616,549
Total Governmental Activities General Revenues	37,247,214	34,657,043	36,756,231	35,879,739
Changes in Net Assets	\$1,017,292	\$44,405	\$3,425,794	\$89,129

Toledo-Lucas County Public Library
Statement of Net Assets
December 31, 2008

	Governmental Activities
<u>Assets</u>	
Equity in Pooled Cash and Cash Equivalents	\$11,597,791
Cash and Cash Equivalents with Escrow Agent	3,944
Accounts Receivable	15,368
Accrued Interest Receivable	11,899
Due from Other Governments	10,709,239
Prepaid Items	710,890
Materials and Supplies Inventory	60,787
Property Taxes Receivable	16,578,905
Nondepreciable Capital Assets	7,957,409
Depreciable Capital Assets, Net	66,965,461
 Total Assets	 114,611,693
<u>Liabilities</u>	
Accrued Wages Payable	187,733
Accounts Payable	434,382
Contracts Payable	300,187
Due to Other Governments	483,881
Claims Payable	510,090
Retainage Payable	57,365
Deferred Revenue	15,358,578
Long-Term Liabilities	
Due Within One Year	697,672
Due in More Than One Year	1,426,510
 Total Liabilities	 19,456,398
<u>Net Assets</u>	
Invested in Capital Assets, Net of Related Debt	74,900,680
Restricted for	
Capital Projects	54,909
Other Purposes	339,822
Library Materials	
Expendable	162,582
Nonexpendable	129,590
Unrestricted	19,567,712
 Total Net Assets	 \$95,155,295

See Accompanying Notes to the Basic Financial Statements

Toledo-Lucas County Public Library
Statement of Activities -- *INCOME STATEMENT*
For the Year Ended December 31, 2008

	Program Revenues			Net (Expense) Revenue and Change in Net Assets
	Expenses	Charges for Services	Operating Grants, Contributions, and Interest	Total
<u>Governmental Activities</u>				
Public Services				
General Public Services	\$25,326,064	\$910,169	\$1,482	(\$24,414,413)
Purchased and Contracted Services	6,981,379	0	0	(6,981,379)
Library Materials and Information	4,872,702	0	41,602	(4,831,100)
Interest and Fiscal Charges	3,030	0	0	(3,030)
Total	\$37,183,175	\$910,169	\$43,084	(36,229,922)

<u>General Revenues</u>	
Property Taxes Levied for General Purposes	15,800,391
Grants and Entitlements not Restricted to Specific Programs	21,000,727
Interest	244,555
Gifts and Donations	49,802
Miscellaneous	151,739
Total General Revenues	37,247,214
Change in Net Assets	1,017,292
Net Assets Beginning of Year	94,138,003
Net Assets End of Year	\$95,155,295

See Accompanying Notes to the Basic Financial Statements

Toledo-Lucas County Public Library
Statement of Net Assets
December 31, 2007

	Governmental Activities
<u>Assets</u>	
Equity in Pooled Cash and Cash Equivalents	\$9,474,654
Cash and Cash Equivalents with Escrow Agent	100,510
Accounts Receivable	9,204
Accrued Interest Receivable	11,588
Due from Other Governments	11,278,448
Prepaid Items	642,959
Materials and Supplies Inventory	59,986
Property Taxes Receivable	17,878,270
Nondepreciable Capital Assets	7,062,181
Depreciable Capital Assets, Net	68,395,954
Total Assets	114,913,754
<u>Liabilities</u>	
Accrued Wages Payable	658,422
Accounts Payable	442,949
Contracts Payable	12,133
Matured Compensated Absences Payable	10,041
Due to Other Governments	542,591
Claims Payable	55,356
Retainage Payable	100,510
Deferred Revenue	16,778,589
Long-Term Liabilities	
Due Within One Year	743,961
Due in More Than One Year	1,431,199
Total Liabilities	20,775,751
<u>Net Assets</u>	
Invested in Capital Assets, Net of Related Debt	75,420,747
Restricted for	
Capital Projects	53,752
Other Purposes	287,724
Library Materials	
Expendable	157,892
Nonexpendable	129,590
Unrestricted	18,088,298
Total Net Assets	\$94,138,003

See Accompanying Notes to the Basic Financial Statements

Toledo-Lucas County Public Library
Statement of Activities - *INCOME STATEMENT*
For the Year Ended December 31, 2007

	Program Revenues		Net (Expense) Revenue and Change in Net Assets
	Expenses	Charges for Services	Operating Grants, Contributions, and Interest
			Total
<u>Governmental Activities</u>			
Public Services			
General Public Services	\$24,501,462	\$957,701	\$2,504
Purchased and Contracted Services	6,527,428	0	0
Library Materials and Information	4,629,134	0	89,566
Interest and Fiscal Charges	4,385	0	0
	<u>\$35,662,409</u>	<u>\$957,701</u>	<u>\$92,070</u>
Total			<u>(34,612,638)</u>

<u>General Revenues</u>	
Property Taxes Levied for General Purposes	12,683,803
Grants and Entitlements not Restricted to Specific Programs	21,146,308
Interest	534,221
Gifts and Donations	72,436
Miscellaneous	220,275
Total General Revenues	<u>34,657,043</u>
Change in Net Assets	44,405
Net Assets Beginning of Year	<u>94,093,598</u>
Net Assets End of Year	<u>\$94,138,003</u>

See Accompanying Notes to the Basic Financial Statements

Toledo-Lucas County Public Library
Statement of Activities -- *INCOME STATEMENT*
For the Year Ended December 31, 2006

	Program Revenues			Net (Expense) Revenue and Change in Net Assets
	Expenses	Charges for Services	Operating Grants, Contributions, and Interest	Total
<u>Governmental Activities</u>				
Public Services				
General Public Services	\$23,462,115	\$814,533	\$3,089	(\$22,644,493)
Purchased and Contracted Services	5,908,558	0	0	(5,908,558)
Library Materials and Information	4,042,157	0	97,031	(3,945,126)
Intergovernmental	797,023	0	0	(797,023)
Interest and Fiscal Charges	35,237	0	0	(35,237)
Total	\$34,245,090	\$814,533	\$100,120	(33,330,437)

General Revenues

Property Taxes Levied for General Purposes	13,508,739
Property Taxes Levied for Library Construction	711,866
Property Taxes Levied for Building and Repair	569,332
Grants and Entitlements not Restricted to Specific Programs	20,992,306
Interest	491,228
Gifts and Donations	115,890
Miscellaneous	366,870
Total General Revenues	36,756,231
 Change in Net Assets	 3,425,794
 Net Assets Beginning of Year	 90,667,804
 Net Assets End of Year	 94,093,598

See Accompanying Notes to the Basic Financial Statements

Toledo-Lucas County Public Library
Statement of Net Assets
December 31, 2006

	Governmental Activities
<u>Assets</u>	
Equity in Pooled Cash and Cash Equivalents	\$8,958,055
Cash and Cash Equivalents with Escrow Agent	98,859
Accounts Receivable	35,643
Accrued Interest Receivable	23,919
Due from Other Governments	10,767,950
Prepaid Items	647,613
Materials and Supplies Inventory	72,329
Property Taxes Receivable	14,647,986
Nondepreciable Capital Assets	8,333,662
Depreciable Capital Assets, Net	68,109,466
 Total Assets	 111,695,482
<u>Liabilities</u>	
Accrued Wages Payable	585,795
Accounts Payable	528,165
Contracts Payable	200,844
Due to Other Governments	557,818
Claims Payable	82,217
Retainage Payable	115,590
Deferred Revenue	13,453,931
Long-Term Liabilities	
Due Within One Year	744,928
Due in More Than One Year	1,332,596
 Total Liabilities	 17,601,884
<u>Net Assets</u>	
Invested in Capital Assets, Net of Related Debt	76,391,897
Restricted for	
Capital Projects	52,066
Other Purposes	276,091
Library Materials	
Expendable	150,887
Nonexpendable	129,590
Unrestricted	17,093,067
 Total Net Assets	 \$94,093,598

See Accompanying Notes to the Basic Financial Statements

Toledo-Lucas County Public Library
Statement of Net Assets
December 31, 2006

	Governmental Activities
<u>Assets</u>	
Equity in Pooled Cash and Cash Equivalents	\$8,958,055
Cash and Cash Equivalents with Escrow Agent	98,859
Accounts Receivable	35,643
Accrued Interest Receivable	23,919
Due from Other Governments	10,767,950
Prepaid Items	647,613
Materials and Supplies Inventory	72,329
Property Taxes Receivable	14,647,986
Nondepreciable Capital Assets	8,333,662
Depreciable Capital Assets, Net	68,109,466
 Total Assets	 111,695,482
<u>Liabilities</u>	
Accrued Wages Payable	585,795
Accounts Payable	528,165
Contracts Payable	200,844
Due to Other Governments	557,818
Claims Payable	82,217
Retainage Payable	115,590
Deferred Revenue	13,453,931
Long-Term Liabilities	
Due Within One Year	744,928
Due in More Than One Year	1,332,596
 Total Liabilities	 17,601,884
<u>Net Assets</u>	
Invested in Capital Assets, Net of Related Debt	76,391,897
Restricted for	
Capital Projects	52,066
Other Purposes	276,091
Library Materials	
Expendable	150,887
Nonexpendable	129,590
Unrestricted	17,093,067
 Total Net Assets	 \$94,093,598

See Accompanying Notes to the Basic Financial Statements

BTOP Public Computer Center Detail Template

Please complete the Public Computer Center Details worksheet. Add rows as necessary to accommodate all of the Public Computer Centers that will benefit from this project. All centers should be given a type from the specified list. A Community Anchor Institution is considered a community anchor institution if it is a post-secondary educational institution with enrollment of minority exceeding 50% of its total enrollment. Note that the calculated totals in bold will be needed to complete the PCC Capacity page of the application.

The data provided via this template will be subject to automated processing. Applicants are therefore required to provide this upload as an Excel file, and not to convert it to a PDF file upload. Additionally, applicants should not modify the format of this file (e.g. by adding or removing worksheets).

try to
centers
ered a minority-
students
ded to

cants are
PDF prior to
lding or

BTOP Public Computer Centers Detail Template

Title:

Easy Grants ID:

Center Name	Organization	Address Line 1	City	State	Zip	Facility Type	Minority Serving Institution Type
Kent Branch	TLCPL	3101 Collingwood Blvd.	Toledo	OH	43610	Library	N/A
Outreach Services - Cybermobile	TLCPL	1301 N. Reynolds Rd.	Toledo	OH	43615	Library	N/A
Totals:							

Center Name	Estimated # of Total Persons in facility's Service Area	Broadband Workstations				Facility Broadband Connection Speed (Mbps)		Weekday Hours Open to the Public		Weekend Hours Open to the Public		Weekday Number of Persons Served		Weekend Number of Persons Served	
		Number of Broadband Stations Available (CURRENT)	Number of Broadband Stations to be Replaced (PROPOSED)	Number of Broadband Stations to be Added (PROPOSED)	Number of Broadband Workstations Available (PROPOSED)	Facility Broadband Connection Speed (CURRENT Mbps)	Facility Broadband Connection Speed (PROPOSED Mbps)	Average Hours Open to Public Per 120-hour Business Week (CURRENT)	Average Hours Open to Public Per 120-hour Business Week (PROPOSED)	Average Hours Open to Public Per 48-hour Weekend (CURRENT)	Average Hours Open to Public Per 48-hour Weekend (PROPOSED)	Proposed # persons served per 120-hour business week (CURRENT)	Proposed # persons served per 120-hour business week (PROPOSED)	Proposed # persons served per 48-hour weekend (CURRENT)	Proposed # persons served per 48-hour weekend (PROPOSED)
Kent Branch	313619	33	23	99	109	5	20	34	48	8.5	8.5	100	220	10	20
Outreach Services - Cybermobile	313619	0	0	12	12	0	12	30	30	0	0	0	120	0	0
Totals: 627238		33	23	111	121	2.5	16.0	32.0	39.0	4.3	4.3	100	340	10	20

BTOP Public Computer Center and Sustainable Broadband Detailed Budget

Please complete the Detailed Budget, breaking out individual line items under each category heading (add rows to each section as necessary to accommodate your line items). Please ensure line item total columns in the "General" and "Detail" sections are equal for each line item (a cell with a yellow highlight indicates an inconsistency). Also, you may utilize the provided space for additional notes, if desired (there is also a Budget Narrative question in the application in which you will provide narrative detail on this budget).

Specifics needed for each cost category line item:

Personnel: For each position, list the number of positions, the location or geography of position, the job/task responsibilities for the position, the annual salary, and the percent of time a person filling the position will spend working on the proposed BTOP project. For lines with more than one position, the Quarters Employed field should represent number of quarters per person (e.g., for two employees each working for one year, Quarters Employed should be 4 rather than 8).

Fringe: For each position, note the number of positions, the annual salary, the percent of time a person filling this position will spend working on the proposed BTOP project, and the fringe rate applicable to the position. For lines with more than one position, the Quarters Employed field should represent number of quarters per person (e.g. for two employees each working for one year, Quarters Employed should be 4 rather than 8).

Equipment: List all equipment units required for the project and provide program purpose. For each line item, note the number of units and the unit cost. The multiple of these two factors will yield the total for that line item. For example, an Applicant planning to buy 100 laptops at \$500/laptop would have a total line item cost of \$50,000. Again, although unit costs may include cents, once multiplied by the number of units, the result must be rounded to the nearest whole dollar. Clearly separate Applicant equipment and user equipment, as indicated in the detailed budget template. When providing the unit cost indicate whether the unit cost has been impacted by a discount and for software equipment list specific package names.

Travel: For each trip list the program purpose of the trip, destination city and the number of people traveling. For each line item (e.g., trip), note the number of trips and the cost per trip. The multiple of these two factors will yield the total for that line item. For example, if the Applicant was accounting for 10 trips at \$25 per trip, the total cost would be \$250. The cost per trip should be justified on its own, *not* derived by dividing the line item total by the number of trips. Such a calculation will prompt further inquiry from the reviewers about justification for the trip cost. Rather, the *total* trip cost should be derived from the number of trips *times* the justifiable cost per trip.

Supplies: Separate supplies by item type, describing the program purpose or use. For each line item, note the number of units and the unit costs. The multiple of these two factors will yield the total for that line item. For example, an Applicant planning to buy 20 boxes of printer paper at \$30/box would have a total line item cost of \$600. Again, although unit costs may include cents, once multiplied by the number of units, the result must be rounded to the nearest whole dollar.

Other: Separate item types; for awareness program cost items, such as ads, separate ad types (radio, newspaper, etc) and include geography in which they will run.

Contractual: For each line item, identify the contractor and note the number of contracted hours of service.

and hourly rate, if applicable. For example, an Applicant planning to hire a technology consultant for 100 hours at a rate of \$40/hour would have a total line item cost of \$4,000.

Indirect: Provide the indirect rate and basis used. In the space provided at the bottom of the page, briefly explain the calculation used to derive the indirect costs (including the indirect rate and basis included in the basis). If a negotiated indirect cost rate agreement exists and is being used, please identify the cognizant agency.

The category subtotals for this Detailed Budget should correspond to the data provided in your SF-424A, and both the SF-424 budget and this Detailed Budget should match the Federal Grant Request and Total Match Amount provided on the Project Budget page of the application. Please review both budget uploads, the budget narrative in the application, and the Project Budget page for consistency before submitting the application. If you are submitting a PCC project with a SF-424C instead of an SF-424A, the sections of this Detailed Budget will not align directly with the categories of the SF-424C, but you should complete this Detailed Budget, allocating costs to the appropriate cost categories.

The data provided via this template will be subject to automated processing. Applicants are therefore required to provide this upload as an Excel file, and not to convert it to a PDF prior to upload. Additionally, applicants should not modify the format of this file.

e that
all

will

lling

or two

on
ed to
ent

line
ie
would
plied
ite

tiple

e

per

ote
:hat
ld
ed by

s (TV,

service

int for

ige
what
please

ur SF-

ase
age
n SF-

ie

o

**BTOP Public Computer Center and Sustainable Broadband Adoption
Detailed Budget Template**

Easy Grants ID:
Applicant:
Project Title:

SF-424A Object Class Category	General			Detail					
	Position	Federal Support	Matching Support	Total	# of Positions	Salary	% Time Spent on Project	Quarters Employed	Total
a. Personnel - List position, number of staff, annual salaries, % time spent on project									
	Librarian Associate I (2.5 people)	\$68,182.00	\$29,221.00	\$97,403.00	3	\$38,961.00	100%	4.00	\$97,403.00
	Driver/Circulation Clerk III (1 person)	\$26,411.00	\$11,319.00	\$37,730.00	1	\$37,730.00	100%	4.00	\$37,730.00
				\$0.00					\$0.00
				\$0.00					\$0.00
Subtotal		\$94,593.00	\$40,540.00	\$135,133.00					

b. Fringe Benefits - Include salaries and fringe rate.	Position	Federal Support	Matching Support	Total	# of Positions	Salary	% Time Spent on Project	Quarters Employed	Fringe Rate	Total
	Librarian Associate I (2.5 people)	\$19,773.00	\$8,474.00	\$28,247.00	3	\$38,961.00	100%	4.00	29.00%	\$28,247.00
	Driver/Circulation Clerk III (1 person)	\$7,659.00	\$3,282.00	\$10,941.00	1	\$37,730.00	100%	4.00	29.00%	\$10,941.00
				\$0.00						\$0.00
				\$0.00						\$0.00
Subtotal		\$27,432.00	\$11,756.00	\$39,188.00						

c. Travel - For significant costs, include details such as number and purpose of trips, destinations.	Purpose of Trip	Federal Support	Matching Support	Total	# of Trips	Cost per Trip	Total
				\$0.00			\$0.00
				\$0.00			\$0.00
				\$0.00			\$0.00
				\$0.00			\$0.00
Subtotal		\$0.00	\$0.00	\$0.00			

d. Equipment Costs - List equipment with # of units and unit costs. Distinguish between equipment intended for applicant use versus equipment for the end user.	Equipment Description	Federal Support	Matching Support	Total	#Units	Unit Cost	Total
Applicant Equipment							
	Cisco 2811-VSEC/K9 Integrated Services Router w/SRST	\$2,868.00	\$1,229.00	\$4,097.00	1	\$4,097.00	\$4,097.00
	Cisco Catalyst 3560 48-port PoE Switch w/Copper SFP Modules	\$11,741.00	\$5,032.00	\$16,773.00	3	\$5,591.00	\$16,773.00
	Cisco Aironet 1252AG Access Point	\$1,273.00	\$546.00	\$1,819.00	2	\$909.30	\$1,819.00
	APC Netshelter SX 42U 600mm x 1070mm Deep Enclosure	\$1,596.00	\$684.00	\$2,280.00	2	\$1,140.00	\$2,280.00
	APC - Cable organizer - black - 2U	\$97.00	\$41.00	\$138.00	3	\$46.00	\$138.00
	APC Blanking Panel Kits (1U, 2U, 4U, 8U)	\$302.00	\$130.00	\$432.00	6	\$72.00	\$432.00
	APC Rack PDU, Basic, Zero U, 20A, 120V, (14)5-15	\$378.00	\$162.00	\$540.00	4	\$135.00	\$540.00
	APC Rackmount Keyboard Monitor Mouse - KVM console - TFT - 17"	\$830.00	\$356.00	\$1,186.00	1	\$1,186.00	\$1,186.00
	APC 8-port Analog KVM w/8 sets PS/2 KVM Cables	\$690.00	\$295.00	\$985.00	1	\$985.00	\$985.00
	APC Sliding Shelf 100lbs/45.5kg Black	\$120.00	\$52.00	\$172.00	1	\$172.00	\$172.00
	CAT6 Patch Cables	\$700.00	\$300.00	\$1,000.00	200	\$5.00	\$1,000.00
	APC UPS SUA2200 Rackmount	\$1,651.00	\$707.00	\$2,358.00	2	\$1,179.00	\$2,358.00

Dell Optiplex 780 SFF w/dual 17in Flat Screen Monitors	\$899.00	\$385.00	\$1,284.00	1	\$1,284.00	\$1,284.00
Dell PowerEdge R300 Server (Printing/Timing & Print Release)	\$2,160.00	\$926.00	\$3,086.00	1	\$3,086.00	\$3,086.00
Dell PowerEdge R410 Server (File/Data)	\$3,499.00	\$1,500.00	\$4,999.00	1	\$4,999.00	\$4,999.00
Middle Atlantic ERK-44-25 44U Floor Equipment Rack-25" Deep	\$1,230.00	\$527.00	\$1,757.00	1	\$1,757.08	\$1,757.00
Middle Atlantic PD-44 44U Plexi Glass Front Door	\$351.00	\$151.00	\$502.00	1	\$502.00	\$502.00
Middle Atlantic VTF-1 1U Vent	\$106.00	\$46.00	\$152.00	11	\$13.82	\$152.00
Middle Atlantic EB-3 3U Blank	\$9.00	\$4.00	\$13.00	1	\$13.00	\$13.00
Middle Atlantic U3 3U Rack Shelf	\$83.00	\$36.00	\$119.00	2	\$59.50	\$119.00
Middle Atlantic BB-40 Ground Buss Bar (and Straps)	\$114.00	\$49.00	\$163.00	1	\$163.00	\$163.00
Middle Atlantic D\$ 4U Drawer	\$119.00	\$51.00	\$170.00	1	\$170.00	\$170.00
Middle Atlantic PDS-615R Powwer Sequencer	\$335.00	\$144.00	\$479.00	1	\$479.00	\$479.00
Middle Atlantic PD-815SC-NS Rack Power Strip	\$149.00	\$64.00	\$213.00	3	\$71.00	\$213.00
Torrence TS-EB1 Contact Information Blank Panel	\$19.00	\$8.00	\$27.00	1	\$27.00	\$27.00
AKG HM-1000 Hanging Microphones	\$700.00	\$300.00	\$1,000.00	4	\$250.00	\$1,000.00
Telex FMR-500HL Wireless Mic Sys w/Handheld & Lav Mics	\$633.00	\$271.00	\$904.00	1	\$904.00	\$904.00
Telex RE97TXBlack Headworn Microphone	\$235.00	\$100.00	\$335.00	1	\$335.00	\$335.00
Listen LS-03-072-01 Pro-Performance Pk w/ 4 receivers & Ext Ant	\$1,159.00	\$497.00	\$1,656.00	1	\$1,656.00	\$1,656.00
Contemporary Research 232STS Analog Channel Tuner w/closed Catonino & Rack Mount	\$1,002.00	\$430.00	\$1,432.00	2	\$716.00	\$1,432.00
Sony BDP-S360 Bluray Player	\$149.00	\$64.00	\$213.00	1	\$213.00	\$213.00
Middle Atlantic RC-2 Clamoing 2U Rackshelf	\$53.00	\$23.00	\$76.00	1	\$76.00	\$76.00
Proco Custom 1U Plate for Record Output	\$62.00	\$27.00	\$89.00	1	\$89.00	\$89.00
Sony FWD40LX2F/B 40" Display	\$1,259.00	\$540.00	\$1,799.00	1	\$1,799.00	\$1,799.00
Peerless ST650 Tilting Wall Mount	\$168.00	\$72.00	\$240.00	1	\$240.00	\$240.00
Biamp Nexia CS 10x6 Audio DSP System	\$1,672.00	\$717.00	\$2,389.00	1	\$2,389.00	\$2,389.00
QSC CX320V Dual Channel 70v Amplifier	\$710.00	\$304.00	\$1,014.00	1	\$1,014.00	\$1,014.00
Extron MA 84 AV 8x4 Matrix Composite Video Switch	\$704.00	\$301.00	\$1,005.00	1	\$1,005.00	\$1,005.00
Extron MTPX-168 16x8 UTP Matrix Video Switch	\$7,449.00	\$3,193.00	\$10,642.00	1	\$10,642.00	\$10,642.00
Extron MTP T 15HD A VGA over UTP Transmitter w/VGA Thru	\$4,157.00	\$1,781.00	\$5,938.00	14	\$424.14	\$5,938.00
Extron VTR001 VGA over UTP Receiver	\$1,064.00	\$456.00	\$1,520.00	5	\$304.00	\$1,520.00
Extron IN1502 Video-VGA Scaler	\$830.00	\$356.00	\$1,186.00	1	\$1,186.00	\$1,186.00
Extron VSC-500 VGA-Video Scan Convertot	\$957.00	\$410.00	\$1,367.00	1	\$1,367.00	\$1,367.00
Extron Rack Mounts	\$130.00	\$56.00	\$186.00	2	\$93.00	\$186.00
Crestron Pro2 Controller System	\$4,151.00	\$1,779.00	\$5,930.00	1	\$5,930.00	\$5,930.00
Crestron C2COM3 3 Port Serial Expansion	\$817.00	\$350.00	\$1,167.00	2	\$583.50	\$1,167.00
Crestron C2ENET1 Single Ethernet Port Expansion	\$497.00	\$213.00	\$710.00	1	\$710.00	\$710.00
Crestron TPS-4000 Wired 10" Touchpanel	\$2,821.00	\$1,209.00	\$4,030.00	1	\$4,030.00	\$4,030.00
Crestron IRP2 IR Probe	\$34.00	\$14.00	\$48.00	1	\$48.00	\$48.00
Torrence Serial Cables	\$48.00	\$20.00	\$68.00	1	\$68.00	\$68.00
Proco Custom 3G Plate w/VGA, NiniAud, Vid, LR Aud	\$134.00	\$58.00	\$192.00	1	\$192.00	\$192.00
Sony EVI-D100 PTZ Camera	\$1,732.00	\$742.00	\$2,474.00	2	\$1,237.00	\$2,474.00
Sony CAMWMBKT Wall Mount Arm	\$225.00	\$97.00	\$322.00	2	\$161.00	\$322.00
NEC LCD6520LBKAV 65" LCD Display	\$18,090.00	\$7,753.00	\$25,843.00	2	\$12,921.50	\$25,843.00
Peerless ST650 Tilting Wall Mount	\$245.00	\$105.00	\$350.00	2	\$175.00	\$350.00
Smartboard PN 365 Smart Touch Overlay	\$3,654.00	\$1,566.00	\$5,220.00	1	\$5,220.00	\$5,220.00

Smartboard CAT5-XT USB over Cat5 Extender	\$114.00	\$49.00	\$163.00	1	\$163.00	\$163.00
Tannoy 8000 3760 IW6 TDC Flush Wall Mount Speakers	\$521.00	\$223.00	\$744.00	2	\$372.00	\$744.00
Tannoy 8000 4020 Back Can w/Transformer	\$203.00	\$87.00	\$290.00	2	\$145.00	\$290.00
Extron 26-531-01 6" 5BNCF-HD15M Breakout	\$41.00	\$17.00	\$58.00	2	\$29.00	\$58.00
Torrence DVI-5BNCF & BNCM Cables in Rack	\$99.00	\$43.00	\$142.00	1	\$142.00	\$142.00
Torrence Short VGA Cables	\$31.00	\$13.00	\$44.00	3	\$14.67	\$44.00
WestPenn 815 RG59 Wire with Connectors	\$1,535.00	\$658.00	\$2,193.00	1	\$2,193.00	\$2,193.00
WestPenn 841 RG6 Wire with Connectors	\$678.00	\$290.00	\$968.00	1	\$968.00	\$968.00
WestPenn 5CRGB 5 Coax Mini RG59 Wire with Connectors	\$1,251.00	\$536.00	\$1,787.00	1	\$1,787.00	\$1,787.00
Extron RJ45 Connectors & Patch Cables	\$721.00	\$309.00	\$1,030.00	1	\$1,030.00	\$1,030.00
WestPenn 226 2C #14 Camera Power Wire	\$706.00	\$302.00	\$1,008.00	1	\$1,008.00	\$1,008.00
WestPenn 292 1TSP Mic Wire & Connectors	\$827.00	\$355.00	\$1,182.00	1	\$1,182.00	\$1,182.00
WestPenn 4245 Cat5-Data & Serial & Plates	\$1,315.00	\$564.00	\$1,879.00	1	\$1,879.00	\$1,879.00
Epiphan VGA Recorder Pro VGA Recording & Streaming System	\$6,181.00	\$2,649.00	\$8,830.00	1	\$8,830.00	\$8,830.00
Tandberg 113886u2 Natural Presenter Upgrade	\$2,554.00	\$1,095.00	\$3,649.00	1	\$3,649.00	\$3,649.00
Torrence Drawings	\$252.00	\$108.00	\$360.00	1	\$360.00	\$360.00
Torrence Engineering	\$2,139.00	\$916.00	\$3,055.00	1	\$3,055.00	\$3,055.00
Torrence Tuning	\$252.00	\$108.00	\$360.00	1	\$360.00	\$360.00
Torrence Office	\$336.00	\$144.00	\$480.00	1	\$480.00	\$480.00
Torrence Remove Existing AV Equip-Pack-Store	\$1,428.00	\$612.00	\$2,040.00	1	\$2,040.00	\$2,040.00
Torrence Re-Install Existing AV Equipment	\$2,688.00	\$1,152.00	\$3,840.00	1	\$3,840.00	\$3,840.00
Cisco Catalst C2960-24LT-L Ethernet Switch	\$880.00	\$377.00	\$1,257.00	1	\$1,257.00	\$1,257.00
Belkin 48-Port Cat6 Patch Panel	\$158.00	\$67.00	\$225.00	1	\$225.00	\$225.00
Cisco 2811-3G-V-SEC/K9 Integrated Services Router	\$1,935.00	\$830.00	\$2,765.00	1	\$2,765.00	\$2,765.00
Cisco ASA5505 Security Appliance	\$488.00	\$209.00	\$697.00	1	\$697.00	\$697.00
Cisco Aironet 1252 Wireless Access Point	\$636.00	\$273.00	\$909.00	1	\$909.00	\$909.00
APC Netshelter SX 24U 600mmx1070mm Enclosure	\$753.00	\$322.00	\$1,075.00	1	\$1,075.00	\$1,075.00
APC Sliding Shelf 100lbs/45.5kg Black	\$120.00	\$52.00	\$172.00	1	\$172.00	\$172.00
APC Cable Organizer - black- 2U	\$32.00	\$14.00	\$46.00	1	\$46.00	\$46.00
APC Nblanking Panel Kits (1u, 2U, 4U, 8U)	\$50.00	\$22.00	\$72.00	1	\$72.00	\$72.00
Dell Optiplex 780 SFF w/dual 17in Flat Screen Monitors	\$899.00	\$385.00	\$1,284.00	1	\$1,284.00	\$1,284.00
Dell PowerEdge R300 Server (PublicPrinting)	\$2,160.00	\$926.00	\$3,086.00	1	\$3,086.00	\$3,086.00
Dell PowerEdge R410 Server (File/Data)	\$3,499.00	\$1,500.00	\$4,999.00	1	\$4,999.00	\$4,999.00
Farber Specialty Vehicles 38' Workhorse Cybermobile	\$175,095.00	\$75,041.00	\$250,136.00	1	\$250,136.00	\$250,136.00
User Equipment						
Dell Optiplex 780 SFF 17in Flat Screen Monitor	\$51,097.00	\$21,898.00	\$72,995.00	65	\$1,123.00	\$72,995.00
ASUS Netbook 1201N-PU17-BK w/2GB RAM	\$8,383.00	\$3,593.00	\$11,976.00	24	\$499.00	\$11,976.00
Dell Optiplex 780 SFF w/17in Flat Screen Monitor	\$3,931.00	\$1,684.00	\$5,615.00	5	\$1,123.00	\$5,615.00
Dell Optiplex 780 SFF w/4GB RAM and Dell P2010H TFT	\$3,290.00	\$1,410.00	\$4,700.00	4	\$1,175.00	\$4,700.00
Natural Reader Education Gold Software +4 Voices	\$139.00	\$59.00	\$198.00	2	\$99.00	\$198.00
ZoomText Level 2 Magnifier with Speech and Keyboard	\$1,887.00	\$809.00	\$2,696.00	4	\$674.00	\$2,696.00
Jaws Professional w/SARA Scanning appliance	\$5,446.00	\$2,334.00	\$7,780.00	2	\$3,890.00	\$7,780.00
Cisco IP Phone 7942G	\$2,176.00	\$932.00	\$3,108.00	12	\$259.00	\$3,108.00
Cisco Device License Units (10pk)	\$490.00	\$210.00	\$700.00	2	\$350.00	\$700.00
Dragon Naturally Speaking 10.1 Standard w/6-n-1 USB Destop Mic	\$244.00	\$105.00	\$349.00	1	\$349.00	\$349.00
HP Laserjet P4515n	\$1,358.00	\$582.00	\$1,940.00	1	\$1,940.00	\$1,940.00

g. Construction - If applicable, list construction costs	Description	Federal Support	Matching Support	Total
	General Construction	\$717,710.00	\$307,590.00	\$1,025,300.00
	Plumbing	\$48,451.00	\$20,765.00	\$69,216.00
	HVAC	\$139,457.00	\$59,767.00	\$199,224.00
	Electrical	\$150,614.00	\$64,549.00	\$215,163.00
	Fire Protection	\$50,400.00	\$21,600.00	\$72,000.00
	Technology Wiring	\$43,954.00	\$18,838.00	\$62,792.00
	Contingency 5%	\$61,824.00	\$26,496.00	\$88,320.00
	FF&E	\$259,700.00	\$111,300.00	\$371,000.00
Subtotal		\$1,472,110.00	\$630,905.00	\$2,103,015.00

h. Other - List costs associated with grant subrecipients as well as other costs not listed above such as rent, technology (website hosting, internet connection), advertising (TV, radio, online), etc.	Description	Federal Support	Matching Support	Total	#Units (If Applicable)	Unit Cost (If Applicable)	Total
	20 MB Service - 12 months	\$4,292.00	\$1,840.00	\$6,132.00			\$6,132.00
	Building Permit Application Fee	\$2,100.00	\$900.00	\$3,000.00			\$3,000.00
	3g or 4G LTE Wireless Broadband Service - 12 months	\$7,000.00	\$3,000.00	\$10,000.00			\$10,000.00
	Technology Contingency	\$3,500.00	\$1,500.00	\$5,000.00			\$5,000.00
	Building Lease-Farber Vehicle Storage - 12 months	\$17,586.00	\$7,535.00	\$25,121.00			\$25,121.00
Subtotal		\$34,478.00	\$14,775.00	\$49,253.00			

i. Total Direct Charges (sum of a-h)	\$2,163,655.00	\$927,281.00	\$3,090,936.00
j. Indirect Charges			\$0.00
Total Eligible Project Costs	\$2,163,655.00	\$927,281.00	\$3,090,936.00
Match Percentage	30.0%		

Explanation of Indirect Charges

Additional Budget Notes