

Delivering Opportunities: Investing in Rural Wyoming Broadband

EasyGrants ID: 7080

Silver Star Telephone Company, Inc.

Supplemental Information Upload

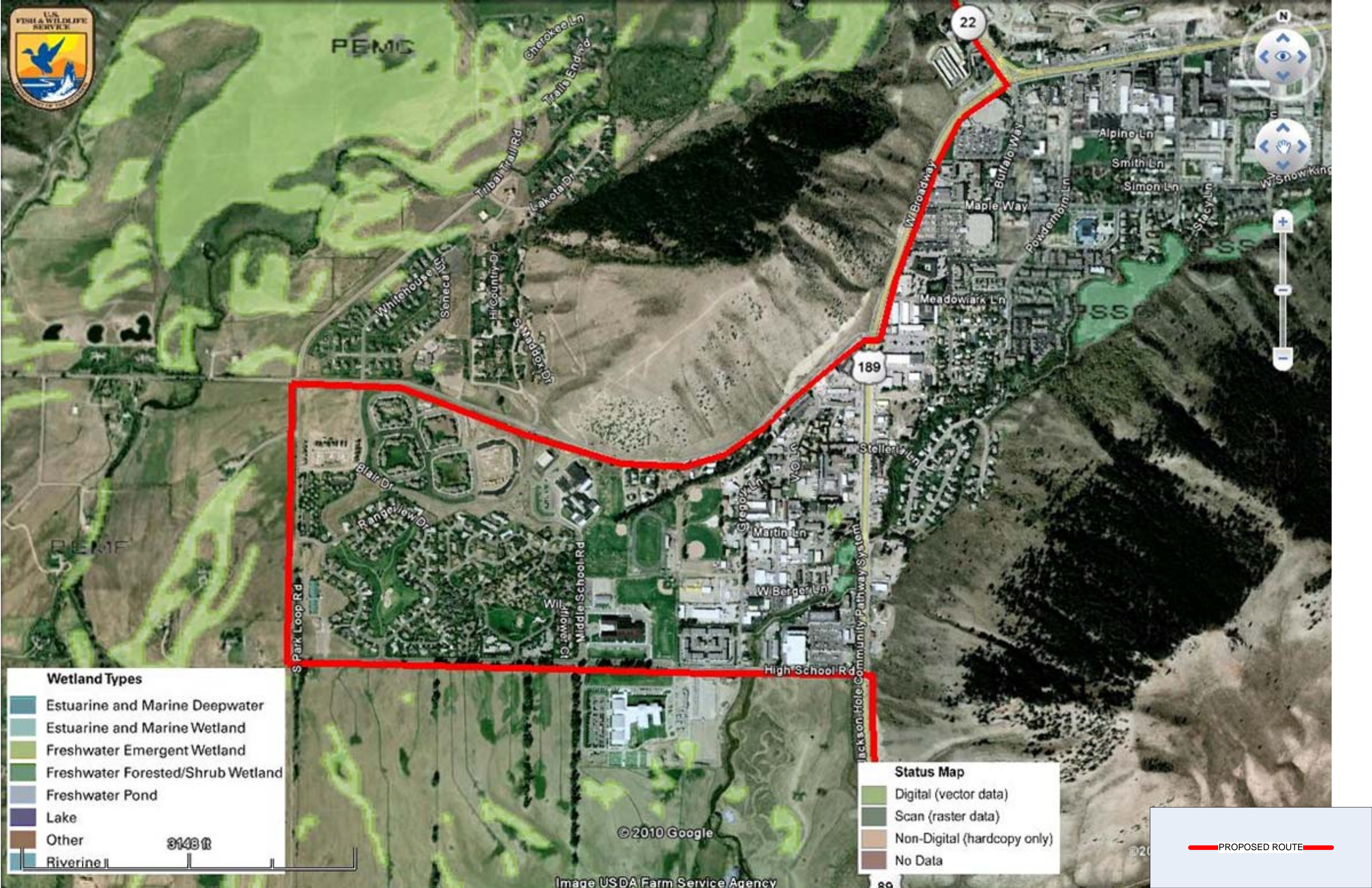
Attachments and Exhibits

Environmental Questionnaire

Exhibits

Wetland

(reference Wetlands)



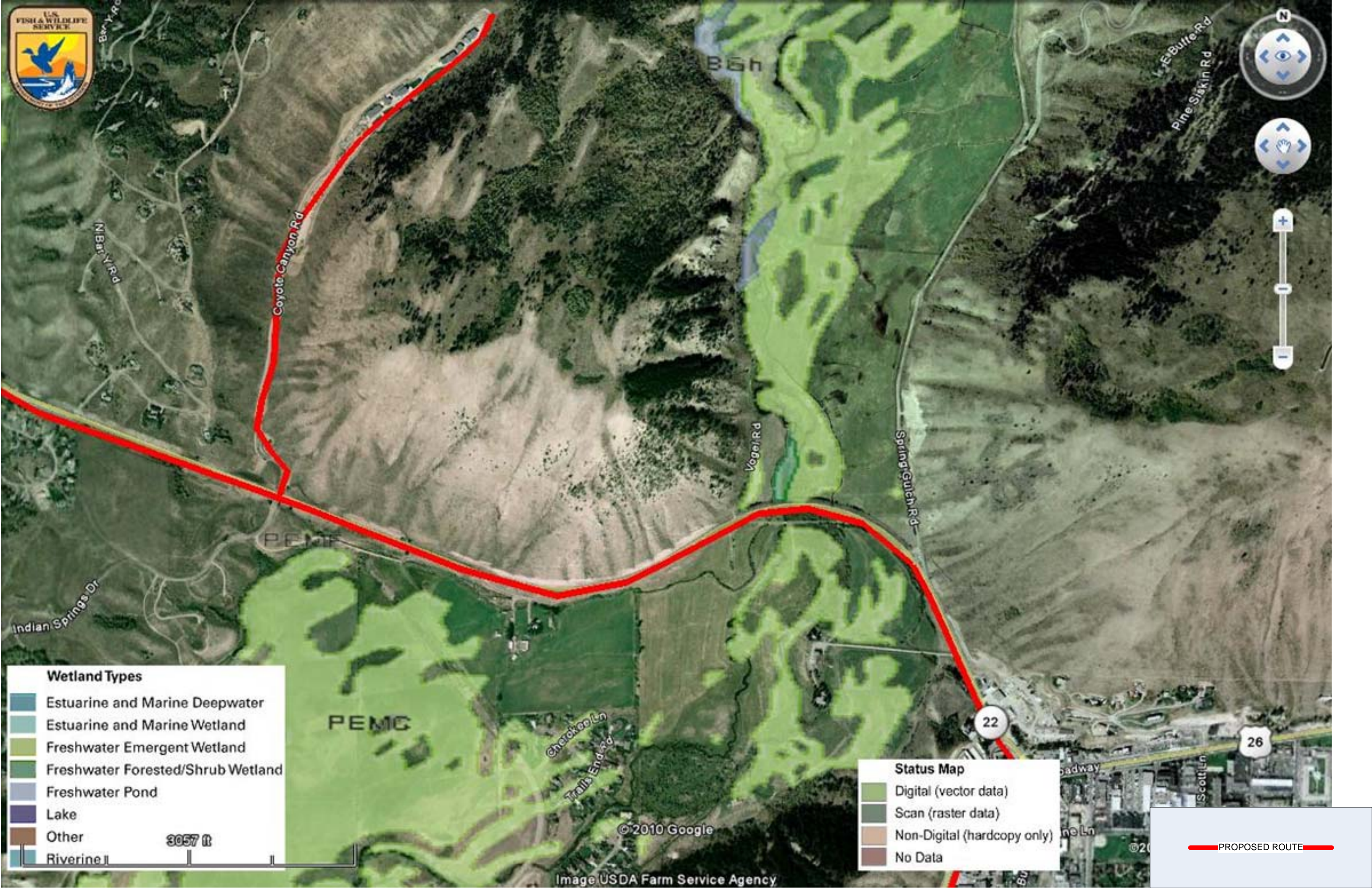
Wetland Types

- Estuarine and Marine Deepwater
- Estuarine and Marine Wetland
- Freshwater Emergent Wetland
- Freshwater Forested/Shrub Wetland
- Freshwater Pond
- Lake
- Other
- Riverine

Status Map

- Digital (vector data)
- Scan (raster data)
- Non-Digital (hardcopy only)
- No Data

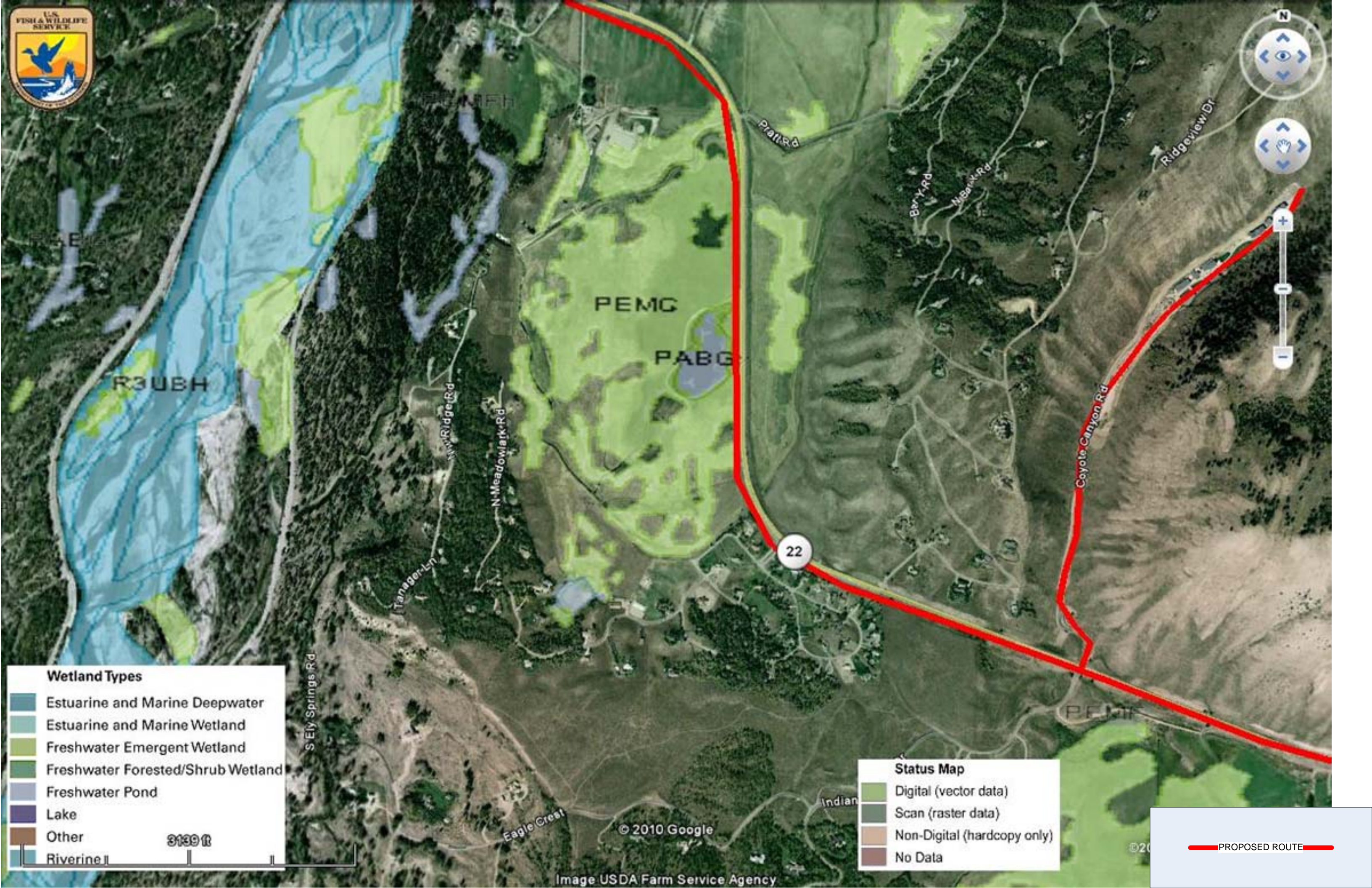
PROPOSED ROUTE



Wetland Types	
	Estuarine and Marine Deepwater
	Estuarine and Marine Wetland
	Freshwater Emergent Wetland
	Freshwater Forested/Shrub Wetland
	Freshwater Pond
	Lake
	Other
	Riverine

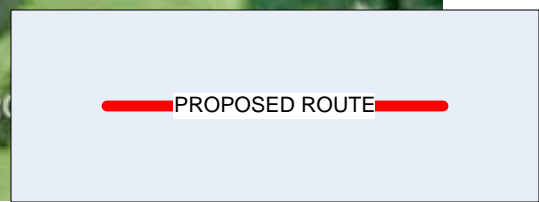
Status Map	
	Digital (vector data)
	Scan (raster data)
	Non-Digital (hardcopy only)
	No Data

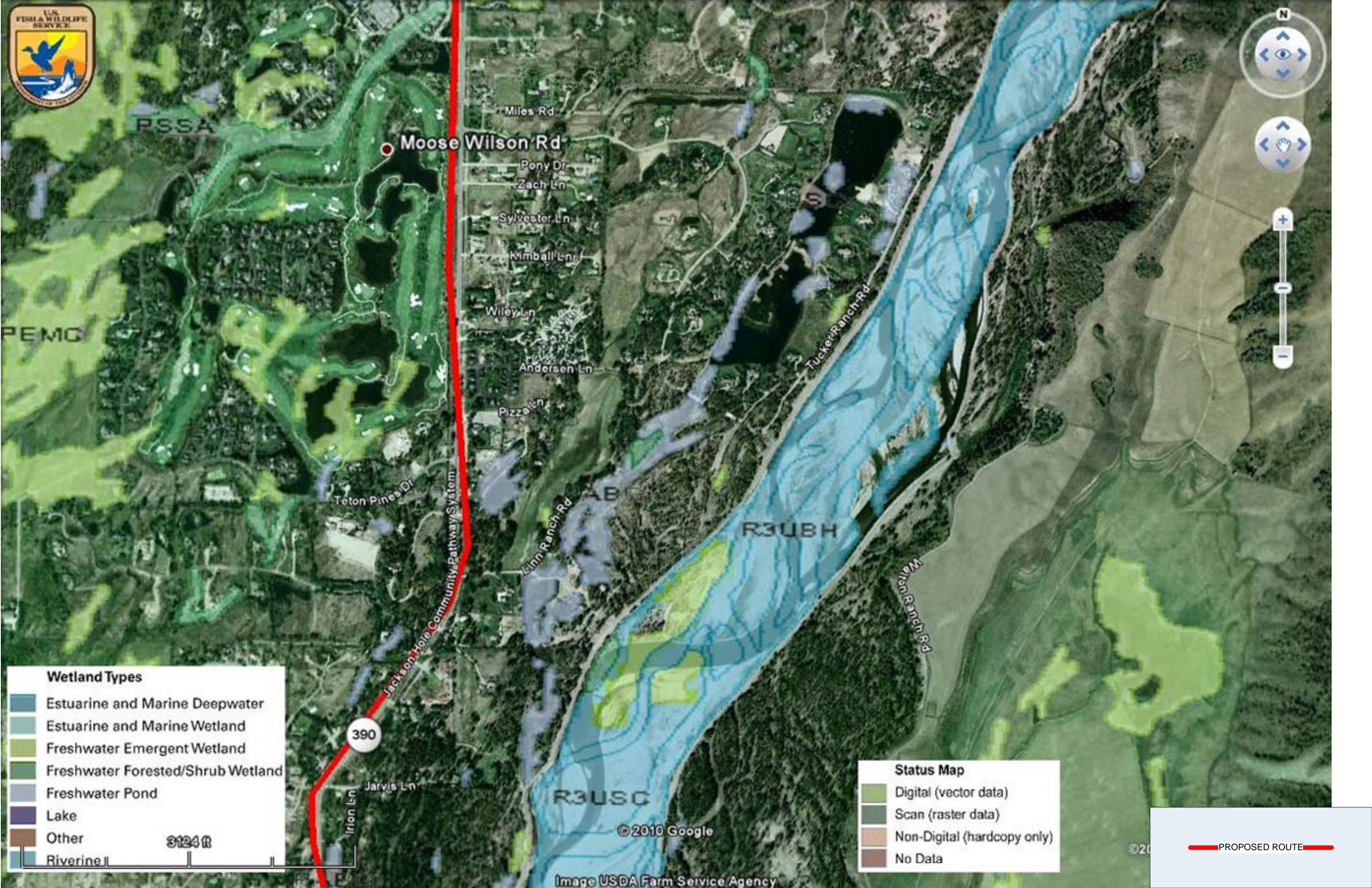
 PROPOSED ROUTE



Wetland Types	
	Estuarine and Marine Deepwater
	Estuarine and Marine Wetland
	Freshwater Emergent Wetland
	Freshwater Forested/Shrub Wetland
	Freshwater Pond
	Lake
	Other
	Riverine

Status Map	
	Digital (vector data)
	Scan (raster data)
	Non-Digital (hardcopy only)
	No Data





Wetland Types

	Estuarine and Marine Deepwater
	Estuarine and Marine Wetland
	Freshwater Emergent Wetland
	Freshwater Forested/Shrub Wetland
	Freshwater Pond
	Lake
	Other
	Riverine

Status Map

	Digital (vector data)
	Scan (raster data)
	Non-Digital (hardcopy only)
	No Data

PROPOSED ROUTE



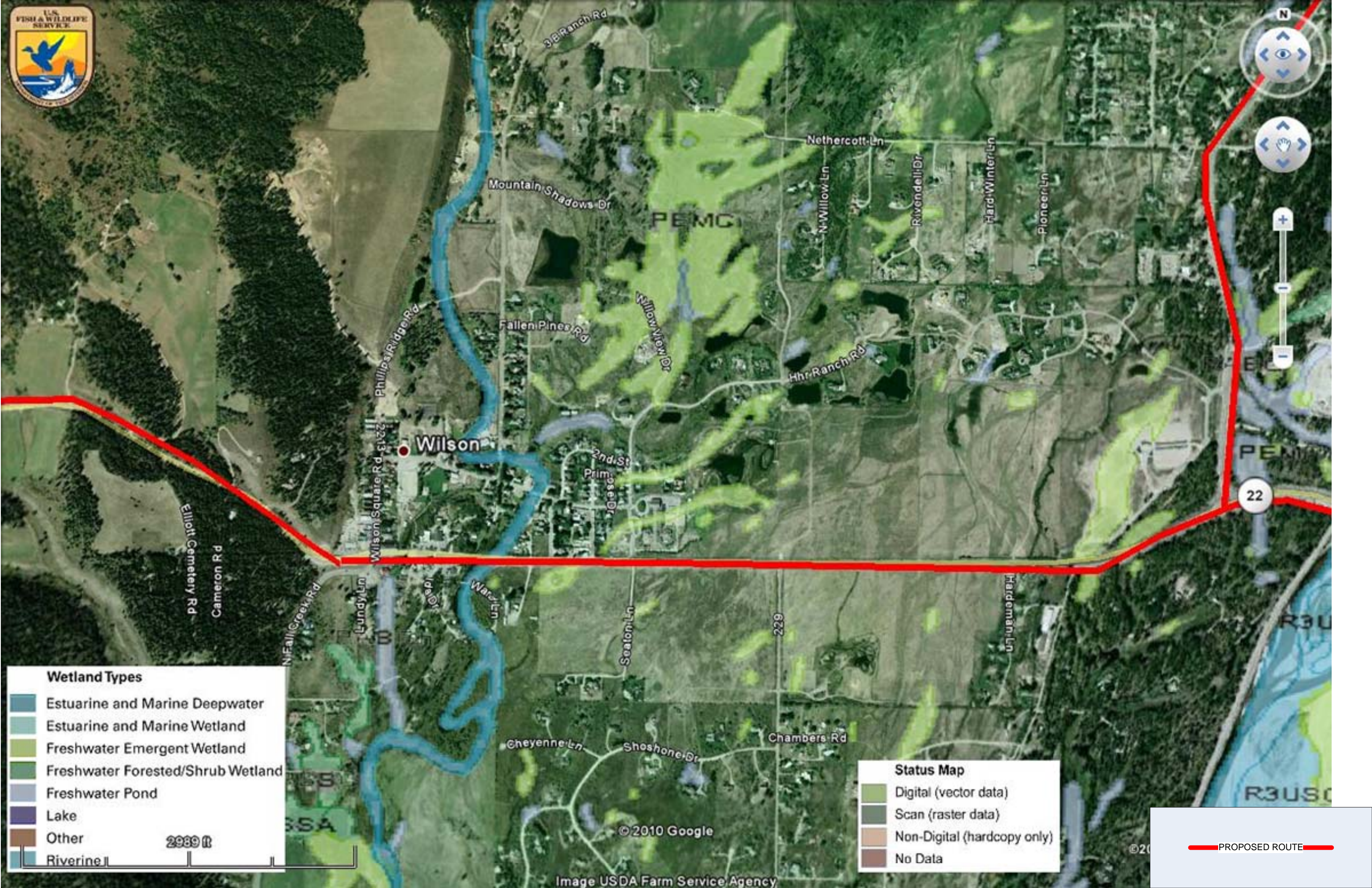
Wetland Types

- Estuarine and Marine Deepwater
- Estuarine and Marine Wetland
- Freshwater Emergent Wetland
- Freshwater Forested/Shrub Wetland
- Freshwater Pond
- Lake
- Other
- Riverine

Status Map

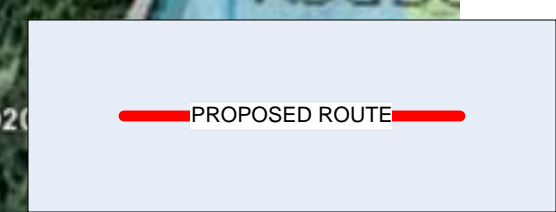
- Digital (vector data)
- Scan (raster data)
- Non-Digital (hardcopy only)
- No Data

PROPOSED ROUTE



Wetland Types	
	Estuarine and Marine Deepwater
	Estuarine and Marine Wetland
	Freshwater Emergent Wetland
	Freshwater Forested/Shrub Wetland
	Freshwater Pond
	Lake
	Other
	Riverine

Status Map	
	Digital (vector data)
	Scan (raster data)
	Non-Digital (hardcopy only)
	No Data





33

Hungry Creek Rd

© 2010 Google

Image USDA Farm Service Agency

Wetland Types

- Estuarine and Marine Deepwater
- Estuarine and Marine Wetland
- Freshwater Emergent Wetland
- Freshwater Forested/Shrub Wetland
- Freshwater Pond
- Lake
- Other
- Riverine

2029 ft

Status Map

- Digital (vector data)
- Scan (raster data)
- Non-Digital (hardcopy only)
- No Data

PROPOSED ROUTE

Critical Habitats

(reference Critical Habitats)

TETON COUNTY, WY

Group	Name	Population	Status	Lead Office	Recovery Plan Name	Recovery Plan Stage
Birds	Bald eagle (Haliaeetus)	lower 48 States	Recovery	Rock Island Ecological Services	Chesapeake Bay Bald Eagle	Final Revision 1
Birds	Bald eagle (Haliaeetus)	lower 48 States	Recovery	Rock Island Ecological Services	Southwestern Bald Eagle	Final
Birds	Bald eagle (Haliaeetus)	lower 48 States	Recovery	Rock Island Ecological Services	Northern States Bald Eagle	Final
Birds	Bald eagle (Haliaeetus)	lower 48 States	Recovery	Rock Island Ecological Services	Southeastern States Bald Eagle	Final Revision 1
Birds	Yellow-billed Cuckoo (Coccyzus)	Western U.S. DPS	Candidate	Sacramento Fish And Wildlife	Recovery Plan for the Pacific	Final
Mammals	Grizzly bear (Ursus arctos)	lower 48 States, except where	Threatened	Grizzly Bear Recovery	Revised Grizzly Bear Recovery	Final Revision 1
Mammals	Grizzly bear (Ursus arctos)	Yellowstone DPS	Threatened	Office Of The Regional Director		
Mammals	Gray wolf (Canis lupus)	Northern Rocky Mtns DPS - WY	Experimental Population, Non-	Wyoming Ecological Services		
Mammals	Canada Lynx (Lynx canadensis)	(Contiguous U.S. DPS)	Threatened	Montana Ecological Services	Recovery Outline for the	Outline

SPECIES BY COUNTY
<http://ecos.fws.gov>



Species Reports

Environmental Conservation Online System

Listings and occurrences for Wyoming

Notes:

- This report shows the listed species associated in some way with this state.
- This list does not include experimental populations and similarity of appearance listings.
- This list includes non-nesting sea turtles and whales in State/Territory coastal waters.
- This list includes species or populations under the sole jurisdiction of the National Marine Fisheries Service.
- Click on the highlighted scientific names below to view a Species Profile for each listing.

Summary of Animals listings

Animal species listed in this state and that occur in this state (6 species)

Status	Species
T	Bear, grizzly lower 48 States, except where listed as an experimental population or delisted (Ursus arctos horribilis)
E	Dace, Kendall Warm Springs (Rhinichthys osculus thermalis)
E	Ferret, black-footed entire population, except where EXPN (Mustela nigripes)
T	Lynx, Canada (Contiguous U.S. DPS) (Lynx canadensis)
E	Sucker, razorback entire (Xyrauchen texanus)
E	Toad, Wyoming (Bufo baxteri (=hemiophrys))

Animal species listed in this state that do not occur in this state (5 species)

Status	Species
E	Chub, bonytail entire (Gila elegans)
E	Chub, humpback entire (Gila cypha)
E	Crane, whooping except where EXPN (Grus americana)
E	Pikeminnow (=squawfish), Colorado except Salt and Verde R. drainages, AZ (Ptychocheilus lucius)
E	Wolf, gray Lower 48 States, except where delisted and where EXPN. Mexico. (Canis lupus)

Animal listed species occurring in this state that are not listed in this state (2 species)

Status	Species
T	Bear, grizzly Yellowstone DPS (Ursus arctos horribilis)
T	Mouse, Preble's meadow jumping U.S.A., north-central CO (Zapus hudsonius preblei)

Summary of Plant listings

Plant species listed in this state and that occur in this state (4 species)

Status	Species
T	Butterfly plant, Colorado (Gaura neomexicana var. coloradensis)

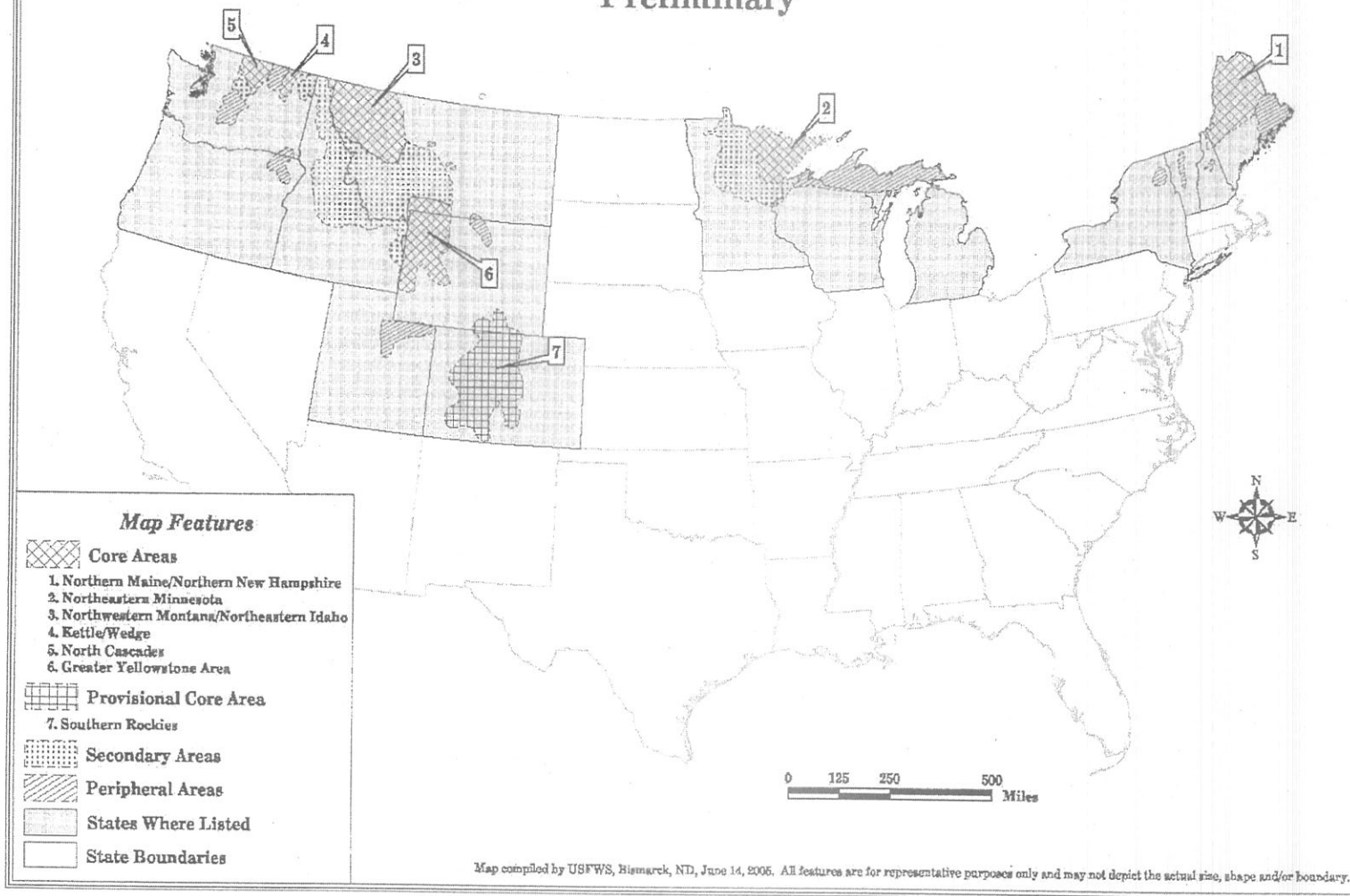
T	Ladies'-tresses, Ute (Spiranthes diluvialis)
E	Penstemon, blowout (Penstemon haydenii)
T	Yellowhead, desert (Yermo xanthocephalus)

Last updated: March 15, 2010

[ECOS Home](#) | [Contact Us](#)

Figure 1: Canada Lynx Recovery Areas

Preliminary





Species Reports

Environmental Conservation Online System

(<http://www.fws.gov>)

Species Report

[Return to the Query Form \(/tess_public/pub/adHocSpeciesCountForm.jsp\)](#)

- States: WY
- Listings

Family	Count
Accipitridae	4
Acipenseridae	1
Anatidae	1
Apiaceae	4
Asteraceae	18
Boraginaceae	3
Bovidae	1
Brassicaceae	20
Bufonidae	2
Canidae	3
Capparaceae	1
Catostomidae	3
Charadriidae	2
Colubridae	1
Cuculidae	1
Cyperaceae	1
Cyprinidae	10
Cyprinodontidae	1
Discidae	1
Dytiscidae	1
Emberizidae	1
Emydidae	1
Fabaceae	9

Family	Count
Felidae	1
Geomyidae	1
Hydrobiidae	1
Iguanidae	1
Iridaceae	1
Laridae	1
Malvaceae	1
Mustelidae	4
Nyctaginaceae	1
Pika	1
Onagraceae	1
Ophioglossaceae	1
Orchidaceae	3
Oreohelcidae	3
Phasianidae	2
Physidae	1
Planorbidae	1
Poaceae	4
Polemoniaceae	3
Polygonaceae	1
Portulacaceae	1
Pupillidae	1
Rallidae	1
Ranidae	2
Ranunculaceae	2
Salmonidae	6
Saxifragaceae	1
Sciuridae	2
Scolopacidae	1
Scrophulariaceae	6
Soricidae	1

Family	Count
Threskiornithidae	1
Ursidae	2
Vespertilionidae	2
Zapodidae	1
Overall	155

Last updated: March 2, 2010

[ECOS Home \(/ecos_public/\)](#) | [Contact Us \(/ecos/helpdesk.do?version=TESS_PUBLIC-1_0_88\)](#)



Species Reports

Environmental Conservation Online System

(<http://www.fws.gov>)

Species Report

[Return to the Query Form \(/tess_public/pub/adHocSpeciesCountForm.jsp\)](/tess_public/pub/adHocSpeciesCountForm.jsp)

- Listing Status: Threatened
- States: WY
- Listings

Regions of Occurrence	Count
1, 6	1
1, 6, 5, 8, 3	1
1, 6, 7	2
6	3
Total	7

Last updated: March 2, 2010

[ECOS Home \(/ecos_public/\)](/ecos_public/) | [Contact Us \(/ecos/helpdesk.do?version=TESS_PUBLIC-1_0_88\)](/ecos/helpdesk.do?version=TESS_PUBLIC-1_0_88)



Species Reports

Environmental Conservation Online System

<http://www.fws.gov>

Species Report

[Return to the Query Form \(/tess_public/pub/adHocSpeciesCountForm.jsp\)](#)

- Species Groups: Mammals
- States: WY
- Listings

Family	Count
Bovidae	1
Canidae	3
Felidae	1
Geomyidae	1
Mustelidae	4
Ochotonidae	1
Sciuridae	2
Soricidae	1
Ursidae	2
Vespertilionidae	2
Zapodidae	1
Total	19

Last updated: March 1, 2010

[ECOS Home \(/ecos_public/\)](#) | [Contact Us \(/ecos/helpdesk.do?version=TESS_PUBLIC-1_0_87\)](#)

US Counties within Wyoming in which the Canada Lynx, (Contiguous U.S. DPS) is known to occur:

<u>State</u>	<u>County</u>
(/speciesProfile/profile/countiesByState.action?state=Wyoming&entityId=24&d-4000306-o=2&d-4000306-p=1&d-4000306-s=0)	(/speciesProfile/profile/countiesByState.action?state=Wyoming&entityId=24&d-4000306-o=2&d-4000306-p=1&d-4000306-s=1)
Wyoming	Sheridan
Wyoming	Teton
Wyoming	Sublette
Wyoming	Fremont
Wyoming	Hot Springs
Wyoming	Big Horn
Wyoming	Lincoln
Wyoming	Carbon
Wyoming	Washakie
Wyoming	Park
Wyoming	Johnson
Wyoming	Albany

Export options: [CSV \(/speciesProfile/profile/countiesByState.action?state=Wyoming&entityId=24&d-4000306-e=1&6578706f7274=1\)](/speciesProfile/profile/countiesByState.action?state=Wyoming&entityId=24&d-4000306-e=1&6578706f7274=1) | [EXCEL \(/speciesProfile/profile/countiesByState.action?state=Wyoming&entityId=24&d-4000306-e=2&6578706f7274=1\)](#) | [XML \(/speciesProfile/profile/countiesByState.action?state=Wyoming&entityId=24&d-4000306-e=3&6578706f7274=1\)](#) | [PDF \(/speciesProfile/profile/countiesByState.action?state=Wyoming&entityId=24&d-4000306-e=5&6578706f7274=1\)](#)

This report contains Counties in which this species is known to occur. If you are looking for the Section 7 range (for Section 7 Consultations), please visit the [IPaC \(/ipac\)](#) application.

US Counties within Wyoming in which the Ute ladies'-tresses, is known to occur:

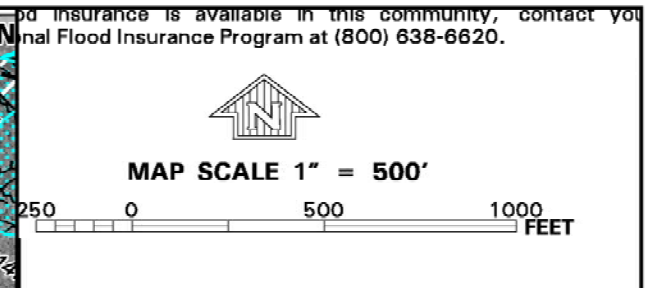
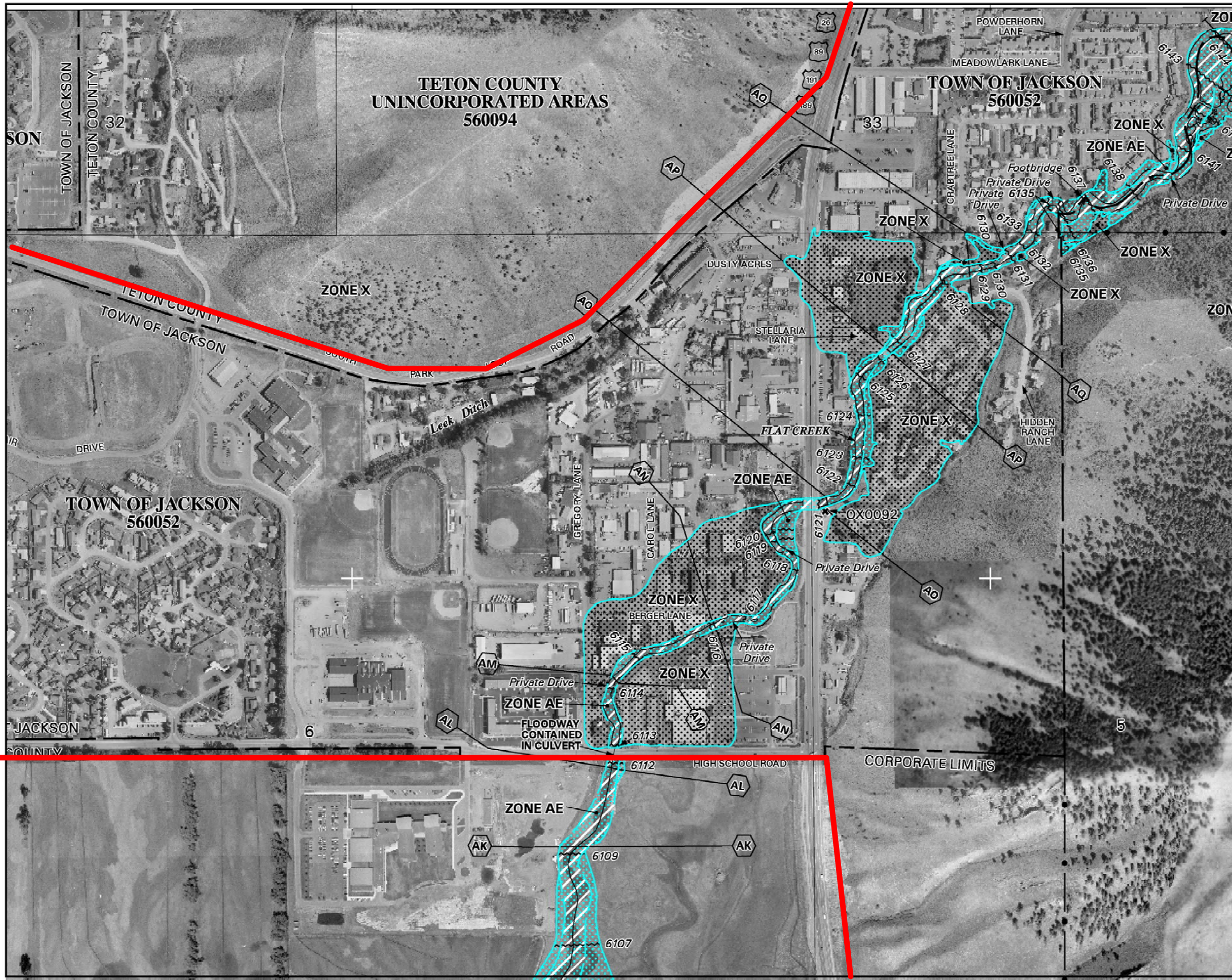
<u>State</u>	<u>County</u>
(/speciesProfile/profile/countiesByState.action?state=Wyoming&entityId=1073&d-4000306-o=2&d-4000306-p=1&d-4000306-s=0)	(/speciesProfile/profile/countiesByState.action?state=Wyoming&entityId=1073&d-4000306-o=2&d-4000306-p=1&d-4000306-s=1)
Wyoming	Weston
Wyoming	Uinta
Wyoming	Sheridan
Wyoming	Sublette
Wyoming	Fremont
Wyoming	Converse
Wyoming	Laramie
Wyoming	Hot Springs
Wyoming	Big Horn
Wyoming	Sweetwater
Wyoming	Natrona
Wyoming	Lincoln
Wyoming	Carbon
Wyoming	Goshen
Wyoming	Crook
Wyoming	Washakie
Wyoming	Platte
Wyoming	Park
Wyoming	Niobrara
Wyoming	Johnson
Wyoming	Campbell
Wyoming	Albany

Export options: [CSV \(/speciesProfile/profile/countiesByState.action?state=Wyoming&entityId=1073&d-4000306-e=1&6578706f7274=1\)](/speciesProfile/profile/countiesByState.action?state=Wyoming&entityId=1073&d-4000306-e=1&6578706f7274=1) | [EXCEL \(/speciesProfile/profile/countiesByState.action?state=Wyoming&entityId=1073&d-4000306-e=2&6578706f7274=1\)](#) | [XML \(/speciesProfile/profile/countiesByState.action?state=Wyoming&entityId=1073&d-4000306-e=3&6578706f7274=1\)](/speciesProfile/profile/countiesByState.action?state=Wyoming&entityId=1073&d-4000306-e=3&6578706f7274=1) | [PDF \(/speciesProfile/profile/countiesByState.action?state=Wyoming&entityId=1073&d-4000306-e=5&6578706f7274=1\)](#)

This report contains Counties in which this species is known to occur. If you are looking for the Section 7 range (for Section 7 Consultations), please visit the [IPaC \(/ipac\)](#) application.

Floodplains

(reference Floodplain)



NIP

NATIONAL FLOOD INSURANCE PROGRAM

PANEL 2908C

FIRM

FLOOD INSURANCE RATE MAP

TETON COUNTY,
WYOMING
INCORPORATED AREAS

PANEL 2908 OF 3325

(SEE MAP INDEX FOR FIRM PANEL LAYOUT)

CONTAINS:

COMMUNITY

NUMBER

PANEL

SUFFIX

TETON COUNTY,
UNINCORPORATED AREAS

560094

2908

C


JACKSON, TOWN OF

560052

2908

C

Notice to User: The Map Number shown below should be used when placing map orders; the Community Number shown above should be used on insurance applications for the subject community.



MAP NUMBER

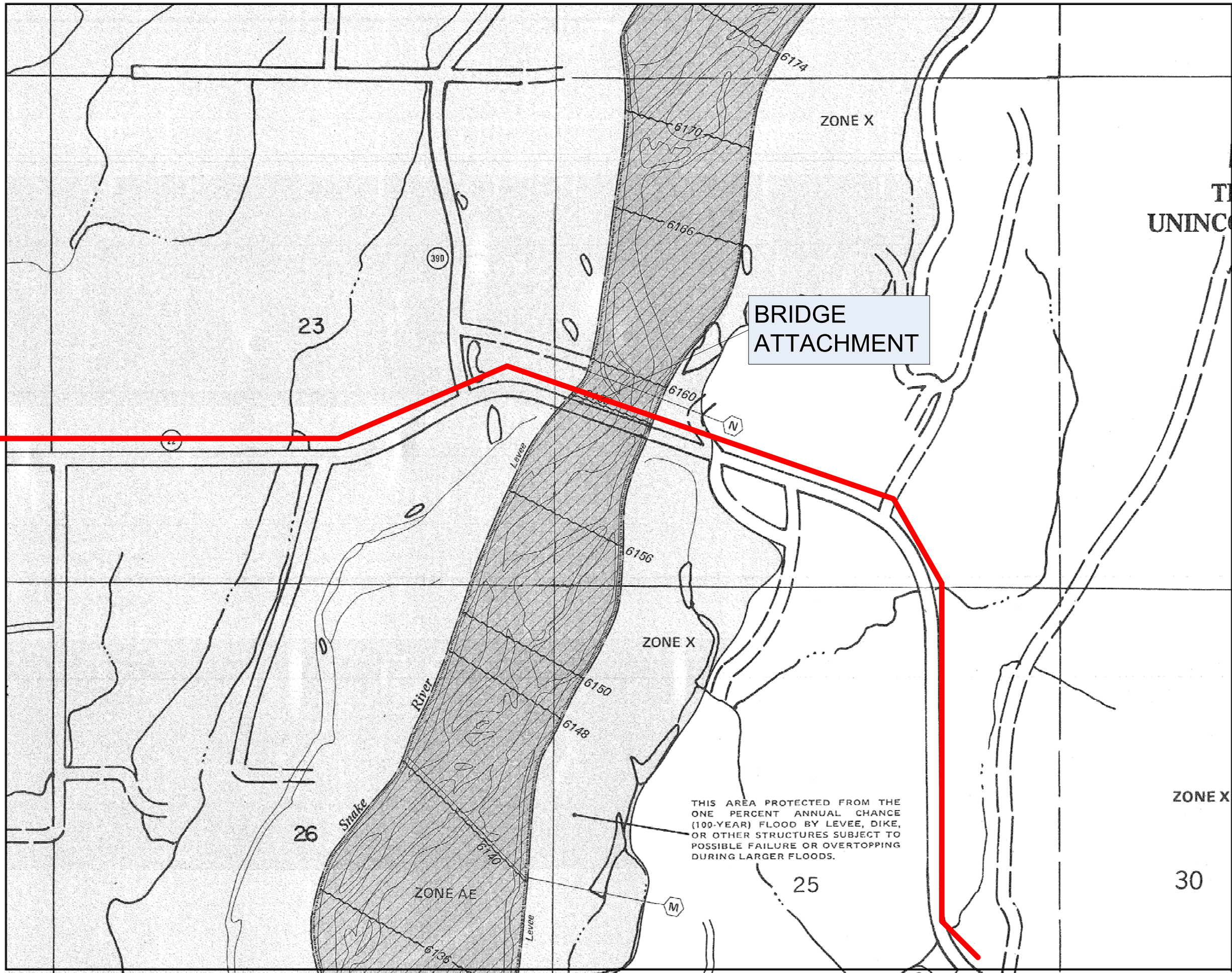
56039C2908C

MAP REVISED:

SEPTEMBER 29, 2006

Federal Emergency Management Agency

This is an official copy of a portion of the above referenced flood map. It was extracted using F-MIT On-Line. This map does not reflect changes or amendments which may have been made subsequent to the date on the title block. For the latest product information about National Flood Insurance Program flood maps check the FEMA Flood Map Store at www.msc.fema.gov



APPROXIMATE SCALE IN FEET
1000 0 1000

NATIONAL FLOOD INSURANCE PROGRAM

**FIRM
FLOOD INSURANCE RATE MAP**

TETON COUNTY,
WYOMING AND
INCORPORATED AREAS

PANEL 540 OF 3325

CONTAINS:

COMMUNITY	NUMBER	PANEL	SUFFIX
TETON COUNTY, UNINCORPORATED AREAS.....	560054.....	0540.....	C

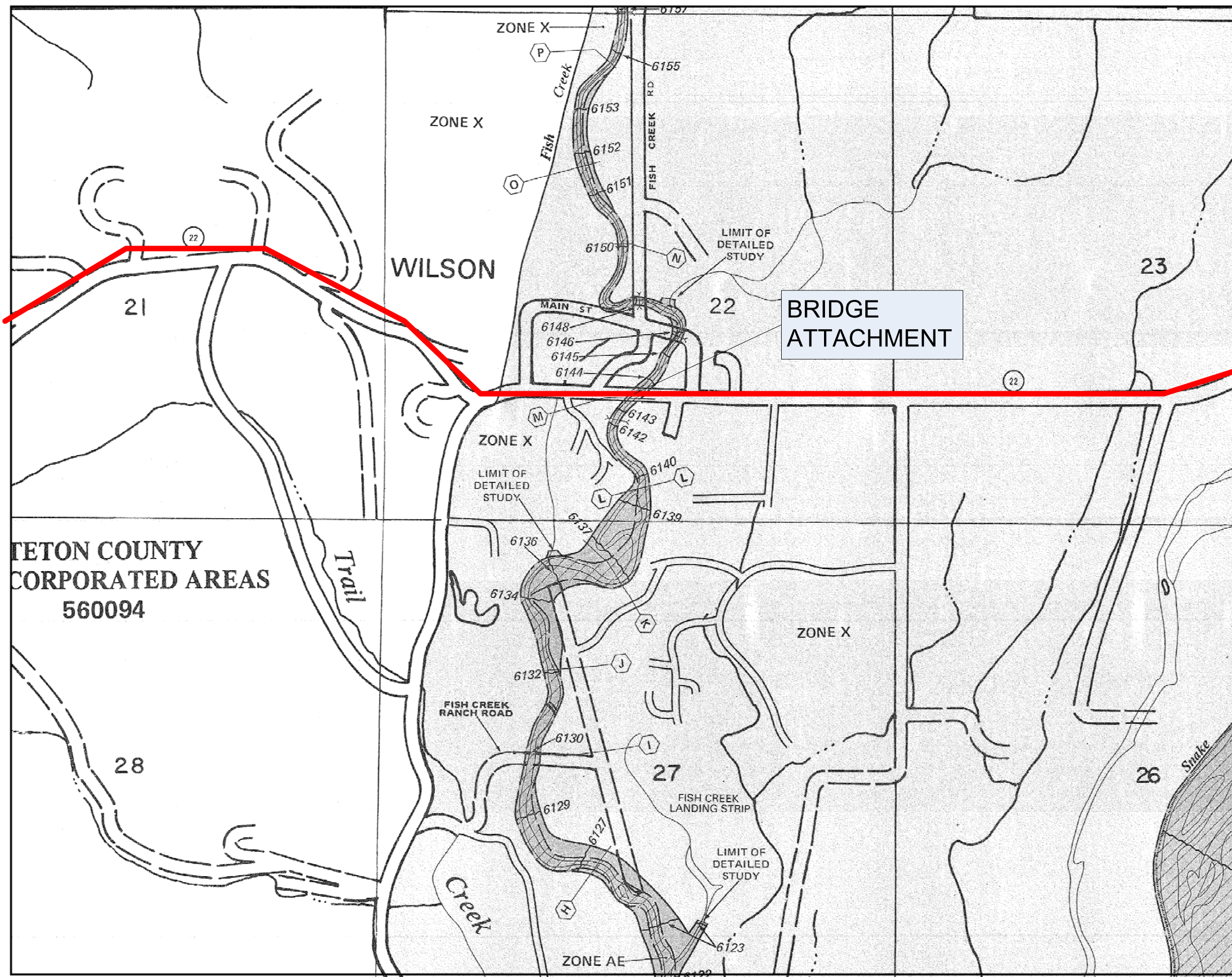
**MAP NUMBER
56039C0540C**

**MAP REVISED:
SEPTEMBER 29, 2006**



Federal Emergency Management Agency

This is an official copy of a portion of the above referenced flood map. It was extracted using F-MIT On-Line. This map does not reflect changes or amendments which may have been made subsequent to the date on the title block. For the latest product information about National Flood Insurance Program flood maps check the FEMA Flood Map Store at www.msc.fema.gov



APPROXIMATE SCALE IN FEET
1000 0 1000

NATIONAL FLOOD INSURANCE PROGRAM

FIRM FLOOD INSURANCE RATE MAP

TETON COUNTY,
WYOMING AND
INCORPORATED AREAS

PANEL 540 OF 3325

CONTAINS:

COMMUNITY	NUMBER	PANEL	SUFFIX
TETON COUNTY, UNINCORPORATED AREAS.....	560094.....	0540.....	C

MAP NUMBER
56039C0540C

MAP REVISED:
SEPTEMBER 29, 2006



Federal Emergency Management Agency

This is an official copy of a portion of the above referenced flood map. It was extracted using F-MIT On-Line. This map does not reflect changes or amendments which may have been made subsequent to the date on the title block. For the latest product information about National Flood Insurance Program flood maps check the FEMA Flood Map Store at www.msc.fema.gov



Mr. Jeremy Larson
Silver Star Communications
104101 US Highway 89
Freedom, WY 83120

13 August 2009

Dear Mr. Larson:

The primary intent of this correspondence is to provide Silver Star Communications with a confirmation of ADVA Optical Networking's (ADVA's) ability to supply Optical Transport products based upon the following projected requirements:

- 1) Approximately 2 to 4 FSP 3000RE or R7 Optical Transport Systems, each equipped with various 2.5G, 10G, GbE, and 10GbE services.

At this point, Silver Star has not requested a firm delivery schedule; however ADVA's typical delivery intervals are 8 weeks with a forecast that is provided 4 weeks prior to purchase order.

Silver Star Communications can count on ADVA not only to deliver the above products in a timely fashion, but also as a financially stable, industry-proven, and operationally capable partner. ADVA has been in business since 1994, is publicly traded (XETRA: ADV.DE) and had 2008 revenues of \$320M. As of year end 2008, ADVA ranked #1 in the deployment of Intelligent Ethernet Access Devices and #4 in Metro Optical Systems, with over 200 carrier and 10,000 enterprise customers globally.

ADVA can provide turnkey EF&I services, including fiber characterization, engineering, installation, system commissioning, and project management to ensure a quality and timely network deployment, and has extensive experience in this regard. In addition, ADVA offers a variety of network planning and management tools, as well as post-warranty support options to ensure that the network is maintained over its lifetime.

ADVA looks forward to the opportunity to partner with Silver Star Communications to ensure the successful completion of this project.

Sincerely,

John Rusin
Regional Sales Director
Phone: +1 303 282 0164
Fax: + 1 303 845 9597
jrusin@advaoptical.com
ADVA Optical Networking NA, Inc.

ADVA Optical Networking Inc.
2301 N. Greenville Ave., Suite 300
Richardson, Texas 75082
USA
Phone: +1 972 759 1200
Fax: +1 972 759 1201

ADVA Optical Networking
North America, Inc.
5755 Peachtree Industrial Blvd.
Norcross, Georgia 30092
USA
Phone: +1 678 728 8600
Fax: +1 770 263 0482

E-mail: info@advaoptical.com
www.advaoptical.com

HypoVereinsbank Munich
Bank Code 700 202 70
Account No. 2 711 400
SWIFT (BIC): HYVEDEMM
IBAN: DE64 7002 0270 0002 7114 00

Deutsche Bank Munich
Bank Code 700 700 10
Account No. 0190 276 600
SWIFT (BIC): DEUTDEMM
IBAN: DE95 7007 0010 0190 2766 00

Headquarters:
ADVA AG Optical Networking
Campus Martinsried
Fraunhoferstrasse 9a
82152 Martinsried / Munich
Germany
Phone: +49 89 89 06 65 0
Fax: +49 89 89 06 65 199

ISO 9001:2000
OQS Reg. No.: 3184/0
VAT No. DE 175 446 349



Codale Electric Supply's Commitment to Supply Material

In anticipation broadband stimulus spending Codale Electric Supply is collaborating with both suppliers and customers to identify products that will be impacted by Broadband Stimulus spending.

Codale has worked with and continues to work with our customers to identify core products and developing joint inventory stocking strategies that will provide them with an advantage, should a supply shortage occur.

Codale is dealing with uncertain or hard to predict demand patterns through the use of blanket orders and Material management agreements. Blanket orders act as an additional layer of supply, above standard stocking levels, and provide early visibility to suppliers to help them plan raw material, production and manufacturing capacity requirements. Codale has secured manufacturing slots for large capacity orders in anticipation of the increase.

Customer blanket orders and material management will be used for both common products utilized across multiple applications and unique products that are often custom-manufactured. The key is establishing good release dates so that Codale knows what product - and how much of it to have in stock - so we can monitor supplier acknowledged dates and ensure the product will be available when needed.

Codale Electric Supply is one of the country's largest single-source providers of equipment and integrated solutions to the telecommunications industry, including a diverse customer base, a broad portfolio of strategic manufacturer relationships and a national logistics network.

Codale Electric Supply's distribution network is comprised of 12 Distribution Centers located strategically within the Intermountain west. Codale has a fleet of over 73 trucks ranging from 1 ton stake beds to full size semi trucks.

Codale looks forward to the opportunity to team up with Communication companies to provide the best on time low cost solution in the market.



Cisco Systems, Inc.
170 West Tasman Drive
San Jose, CA 95134-1706
Phone 408 526-4000
Fax: 408 526 -4100
<http://www.cisco.com>

August 18th, 2009

Jeremy Larson
Network Engineer
SILVER STAR COMMUNICATIONS
PO Box 226 - Freedom, WY 83120

Cisco Systems, Inc. can supply Silver Star Communications with hardware, software, as well as maintenance support, for the entire ONS product line (includes ONS 15454, ONS 15310, etc.), as well as other associated Optics needed to implement or enhance an existing SONET or DWDM network.

Thank you in advance for considering Cisco Systems, Inc.

Tony Martin
Account Manager
13500 SE 75th Street
Newcastle, WA 98059

Vendor Support Letters