

Data Submission Report

Broadband Service Provider Data as of June 30, 2013

Report date: October 1, 2013

Submitted to:

National Telecommunications and Information Administration
United States Department of Commerce

Submitted by:

Kansas Statewide Broadband Initiative
State of Kansas Department of Commerce



and

Kansas Data Access & Support Center (DASC)



Table of Contents

Provider Communications	2
Data Collection Summary.....	3
Service Provider Verification & Feedback Portal	4-5
Public Interactive Web Mapping Application	6
KSBI Maps Homepage	7
Cartographic Development	8
Broadband Content Management System	9
Data Processing & Validation	10-13
Future Direction.....	14
Appendix A (Service Provider Status Table)	15-19

Provider Communications

In keeping with the tradition of provider outreach and communication activities, DASC gave a presentation on the Statewide Broadband Initiative at the Kansas Telecommunications Industry Association (KTIA) annual meeting in Wichita, KS on May 14, 2013. The presentation provided an overview of the broadband data collection and mapping process, and included information on online resources. This event was attended by numerous rural telephone companies and broadband service providers, and served as a great coordination and outreach opportunity.

The data collection process was kicked off in July, 2013 with two data submission webinars that were offered to all Kansas broadband service providers. These webinars included an overview of the data collection plan, purpose and use of the data, and a review of census block and road segment geography. The process of integrating provider data submissions into the NTIA data model was also discussed, along with a demonstration of the Service Provider Feedback & Verification Portal. The request for participation was distributed via email to all known providers. The email contained detailed information tailored to each provider, with a unique hyperlink to the provider portal allowing them to view their previous data submission. In order to ensure maximum participation, an escalation strategy was developed to follow-up with providers that did not meet the initial data submission deadline.

Data Collection Summary

- As of this submission (data current as of June 30, 2013), there are 111 known entities in Kansas that meet the NTIA's State Broadband Initiative (SBI) program definition of broadband service providers.
- 103 of the 111 service providers submitted revised data or confirmed no changes to their previous submission during this reporting period:
 - 38 revised datasets processed for service providers;
 - 65 providers confirmed to have no revision to their prior submission.
- 6 database updates interpreted via data harvested from provider websites.
- 2 service providers declined participation.
- 1 new middle-mile service provider added during this reporting period (Kansas Fiber Network).
- 1 provider removed from database because they no longer provide service in Kansas (Stelera Broadband).
- 39 providers responded to the Data Submission Survey via the Provider Portal.
- 7 providers participated in Data Submission webinars.
- 5 providers participated in interactive data review sessions (web meetings).

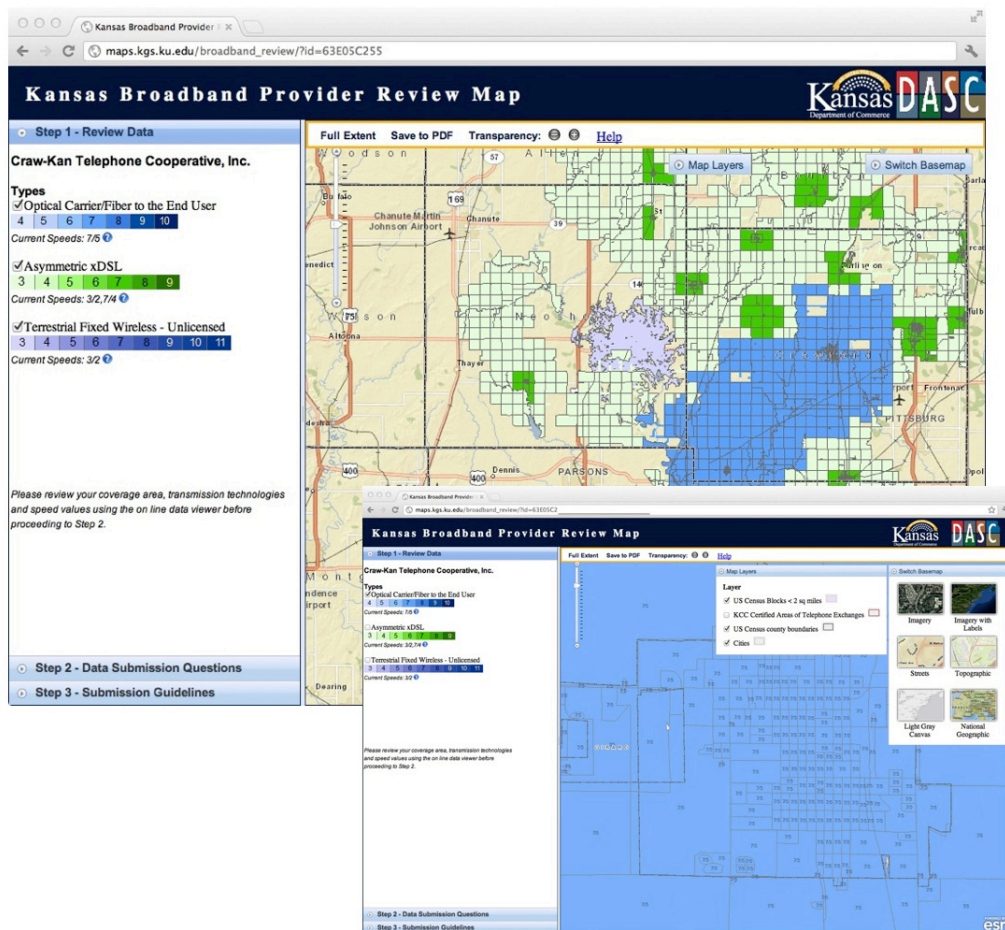
Service Provider Feedback & Verification Portal (provider portal)

The service provider portal offers an efficient and convenient way for providers to review their data and provide feedback to DASC. The portal includes three primary components:

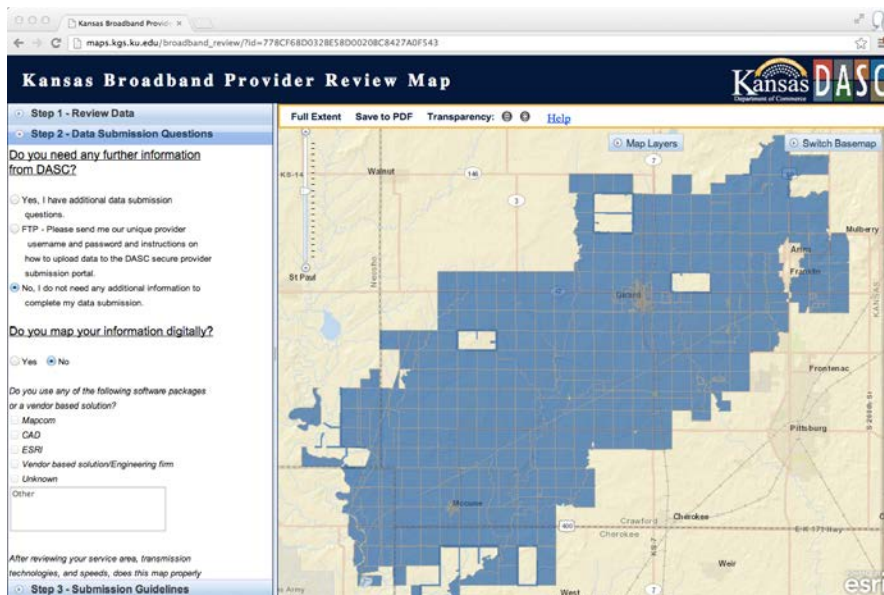
1. Interactive mapping application;
2. Service provider survey form;
3. Web site dashboard (for posting documents and announcements).

Prior to each data collection period, the provider portal is staged with the most-recent version of the broadband mapping database, and the survey questions are reviewed and edited as necessary.

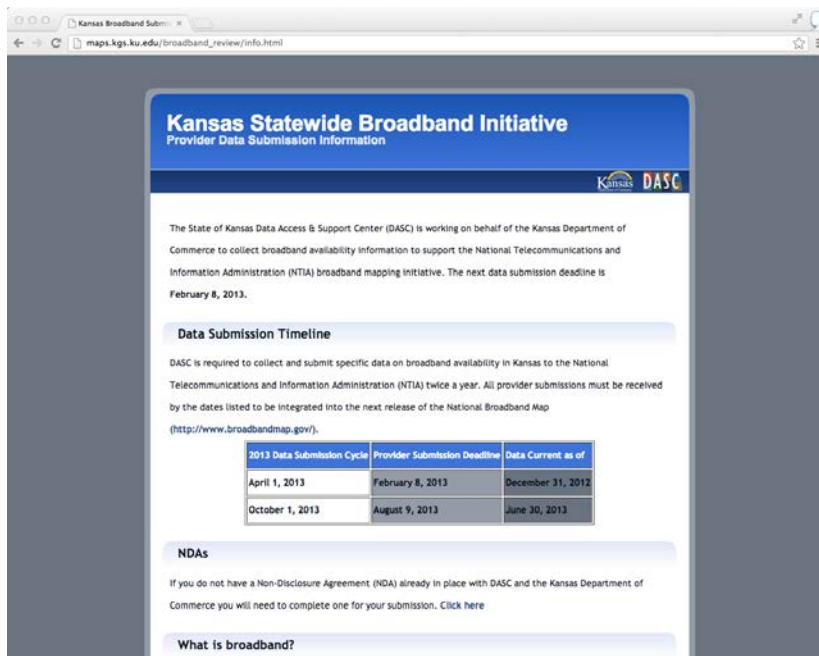
1. The interactive mapping component allows service providers to quickly view the data from their previous submission and determine if updates are required. The map is rendered by transmission technology and speed. Each company receives a unique URL that displays only their data, eliminating the need for usernames and passwords.



- Survey component - each provider is asked to confirm or edit their Provider Name/FRN, contact information, and indicate whether they will be providing updates for the upcoming submission.



- Web site - the provider web site includes information and documents about state and national broadband mapping initiatives, including data submission timelines, geodatabase standards and mapping techniques, and links to data submission spreadsheets. The web site is updated to reflect the current submission cycle.



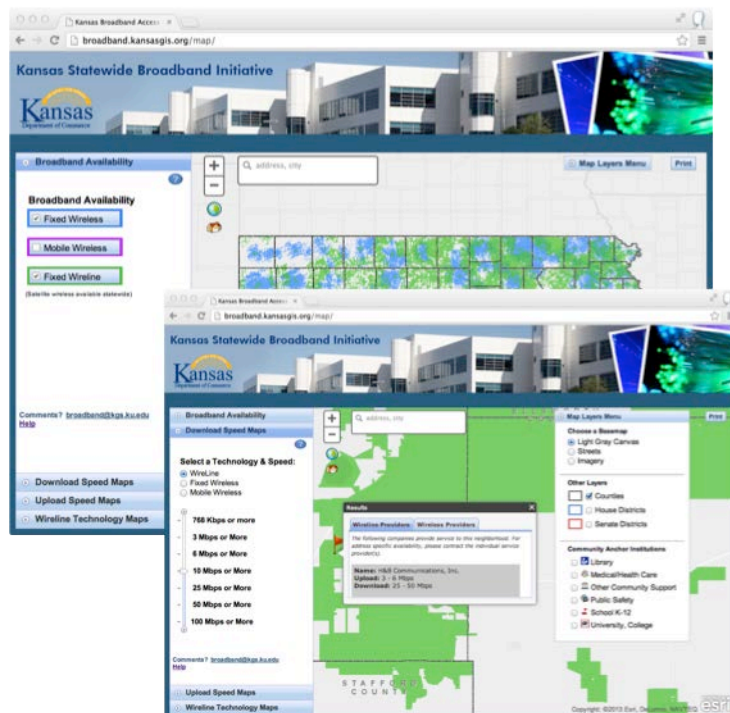
Public Interactive Web Mapping Application

In July, 2013, v2.0 of the public web mapping application was completed and released. This update included the following enhancements:

- Streamlined application interface;
- New *map layers* tool that combines the *map layers* and *base map* functionality into one tool, thereby reducing screen clutter;
- Simplified *zoom-to-location* tool (e.g., county, city, address);
- Improved the *speed map* section of the application by adding a *select-a-speed* slider control, thus removing numerous radio buttons from the interface;
- Incorporated context-sensitive help throughout the application.

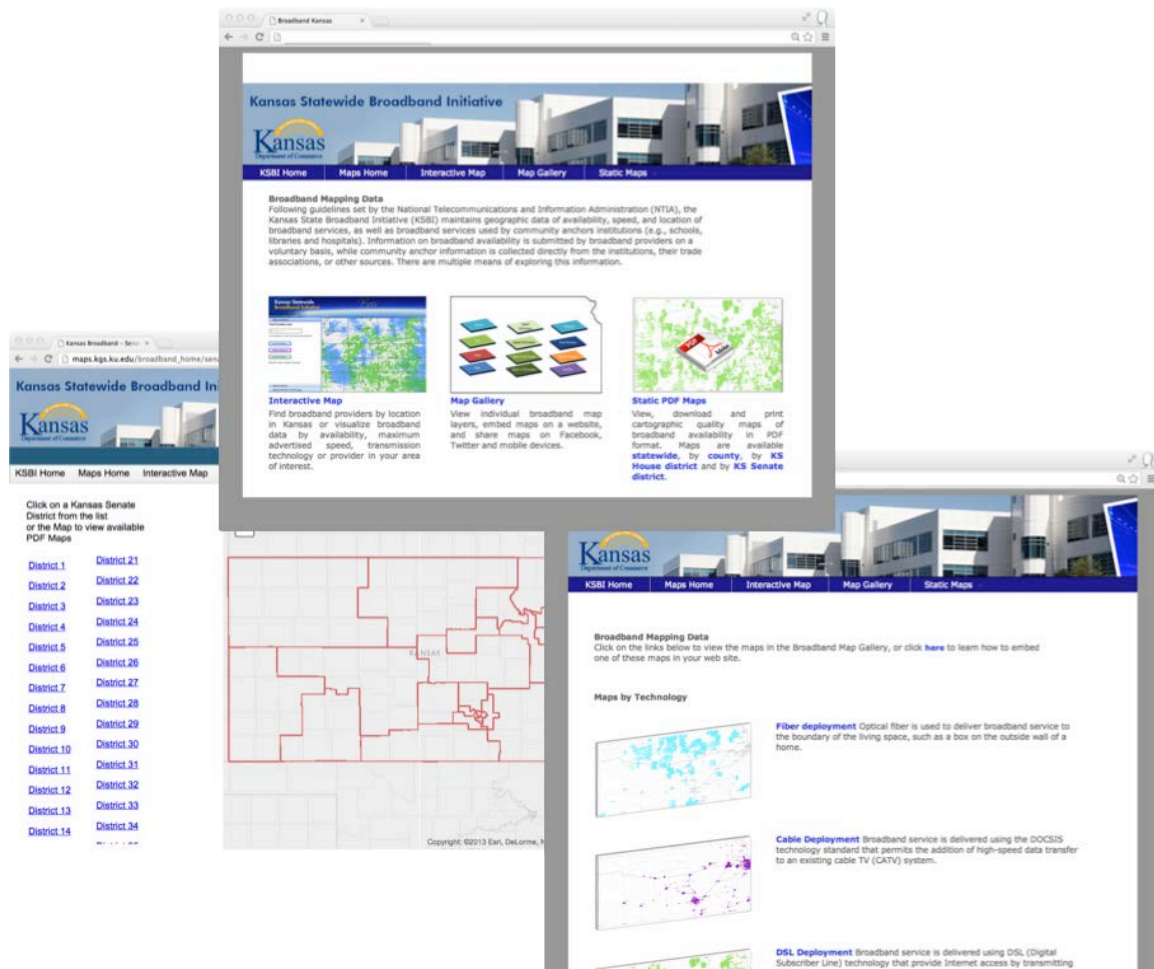
In addition to the items listed above, DASC is also pursuing ADA web accessibility certification through the State of Kansas Office of Information Technology Services. To this end, DASC achieved 100% compliancy scores for all three standards tested by the State's performance toolkit. A set of technical issues was identified during the manual testing procedure, and DASC has since resolved those items. A revised version of the application has been submitted to the Director of IT Accessibility for final review.

DASC is currently working with the KSBI Director to define additional functionality and site design requirements to be addressed in the coming months.



KSBI Maps Homepage

A new web site was developed to provide a consolidated hosting location for the KSBI map products developed by DASC (e.g., public web mapper, interactive map gallery, and PDF map series). The PDF documents and interactive map gallery have unique URL's (i.e., RESTful endpoints) and can be easily embedded into other web sites, as desired. Additionally, the interactive map gallery has 'post to Facebook and Twitter' options built-in, making integration with social media easy. This new site is currently under review by the KSBI Director and will be released pending approval.



Cartographic Development

Over the past several months, the DASC team has worked with the KSBI Director to develop a series of cartographic products. These products are designed to provide simplified, static views of the broadband database, and can be used to support a variety of research and planning activities. The following map series have been created and are currently under review by the KSBI Director. Once approved, the PDF files will be made available through the KSBI Maps homepage:

Broadband Availability by County:

- Broadband Availability, Wireline & Fixed Wireless, 3 Mbps or Greater
- Broadband Availability, Wireline & Fixed Wireless, 6 Mbps or Greater
- Broadband Availability, Wireline & Fixed Wireless, 10 Mbps or Greater
- Broadband Availability, Mobile Wireless, 3 Mbps or Greater
- Broadband Availability, Mobile Wireless, 6 Mbps or Greater
- Broadband Availability, Mobile Wireless, 10 Mbps or Greater

Broadband Availability by Kansas House District:

- Broadband Availability, Wireline & Fixed Wireless, 3 Mbps or Greater
- Broadband Availability, Wireline & Fixed Wireless, 6 Mbps or Greater
- Broadband Availability, Wireline & Fixed Wireless, 10 Mbps or Greater
- Broadband Availability, Mobile Wireless, 3 Mbps or Greater
- Broadband Availability, Mobile Wireless, 6 Mbps or Greater
- Broadband Availability, Mobile Wireless, 10 Mbps or Greater

Broadband Availability by Kansas Senate District:

- Broadband Availability, Wireline & Fixed Wireless, 3 Mbps or Greater
- Broadband Availability, Wireline & Fixed Wireless, 6 Mbps or Greater
- Broadband Availability, Wireline & Fixed Wireless, 10 Mbps or Greater
- Broadband Availability, Mobile Wireless, 3 Mbps or Greater
- Broadband Availability, Mobile Wireless, 6 Mbps or Greater
- Broadband Availability, Mobile Wireless, 10 Mbps or Greater

Statewide map series:

- Maps by speed tier:
 - Broadband Availability, Wireline & Fixed Wireless, 3 Mbps or Greater
 - Broadband Availability, Wireline & Fixed Wireless, 6 Mbps or Greater
 - Broadband Availability, Wireline & Fixed Wireless, 10 Mbps or Greater
 - Broadband Availability, Mobile Wireless, 3 Mbps or Greater
 - Broadband Availability, Mobile Wireless, 6 Mbps or Greater
 - Broadband Availability, Mobile Wireless, 10 Mbps or Greater
- Maps by technology:
 - Optical Fiber
 - Asymmetric DSL
 - Symmetric DSL
 - Cable DOCSIS 3.0
 - Cable other
 - Copper wireline

Broadband Content Management System

The Broadband Content Management System (CMS) continues to serve as the central hub for managing all information collected during the data submission cycle. The CMS features three primary components:

1. Contacts & Communications;
2. Data Submission Log;
3. Data Processing Log.

The underlying relational database that drives these components contains information for all data submissions made by the DASC team, allowing for comparison of provider activity from one submission to the next. While this is a mature system, enhancements and modifications are made as time allows. Additionally, automated reporting tools provide easy access to real-time status reports for the KSBI Director.

The screenshot displays the Broadband Content Management System (CMS) interface, which is divided into three main sections:

- Broadband Contacts:** This section allows users to manage contact information for providers. It includes fields for DBA (Provider Name), FRN, Provider Name, FRN, Transferee, Execution Date, and URL. There are also checkboxes for "Active" and "Inactive" status, and a "Save Background" button.
- Broadband Processing Log:** This section displays a log of data submissions. It includes a table with columns for "User", "Log Date", "Provider", "Delivery KID", and "Status". The table shows a list of providers and their corresponding submission dates and statuses.
- Broadband Inventory Log:** This section displays a log of data submissions. It includes a table with columns for "Provider", "Delivery KID", "Status", "Layer", "Format", "Layer Name", "Status", "Change Type", "Notes", and "Log Date". The table shows a list of providers and their corresponding submission dates and statuses.

Data Processing & Validation

Information is collected from Kansas broadband service providers in a variety of formats including GIS data files, database tables and spreadsheets, CAD files, etc. As files are received, they are reviewed to determine if they contain the required spatial and/or attribute information, and if there is a need for further communication with the provider. As necessary, DASC staff members make follow-up phone calls, send emails, or hold Adobe Connect sessions in order to ensure that the information given by the provider is accurately reflected in the database.

All data submissions to the DASC office are processed according to the following steps:

1. Initial data review to determine quality and fitness for processing. Follow-up with provider if necessary.
2. Creation of provider-specific “staging” geodatabase.
3. Process edits according to information and materials submitted by provider.
4. Review by editing technician.
5. Quality Assurance/Quality Control (QA/QC) review.
6. Integration into statewide geodatabase model.

The following describes the general steps taken to integrate information provided in the various submission formats.

GIS Data (Shapefile/Geodatabase)

Service area descriptions submitted in a GIS data file format are loaded into a provider-specific staging geodatabase where they are used to determine their intersection with census block and road segment geometry. If a census block is smaller than two square miles, it is added to the *CensusBlock* feature class. If a census block is larger than two square miles, the corresponding road segments are added to the *RoadSegment* feature class. All required attribute information is then calculated for each feature class.

Database Tables/Spreadsheets/Text-file (Census Block ID/TIGER-Line ID)

It is common for providers to supply information regarding their service availability in a tabular format including a list of Census Block ID and/or TIGER-Line ID numbers. In these cases, the tabular data is joined to the Census geography to select *CensusBlock* and/or *RoadSegment* features. If a census block is larger than two square miles, the corresponding road segments are added to the *RoadSegment* feature class. Attribute items are then calculated for each feature class in the staging geodatabase.

Database Tables/Spreadsheets/Text-file (Address List)

In cases where service providers submit a table of customer addresses, this information is geocoded (sometimes referred to as address matching) to determine a location for each address in the table. This process results in a point data layer that is used to determine the corresponding census block and road segment assignment. If a point falls within a block that is smaller than two square miles, the block is added to the *CensusBlock* feature class. If a point falls within a block that is larger than two square miles, it is assigned to the nearest road segment and that feature is added to the *RoadSegment* feature class. Attribute items are then calculated for each feature class in the staging geodatabase.

CAD Files/Paper Maps

Some providers submit their service area descriptions as paper maps, PDF maps, or CAD drawings. In these cases, this information is interpreted to determine the intersection with census block and road segment geometry. Again, the two square mile threshold is observed for determining census block and road segment assignments, and the necessary attribute information is encoded into the database.

Wireless Service Area

Mobile wireless service providers supply a GIS data file (polygon feature class) describing their service area and characteristics. Service area polygon features are loaded into the provider-specific staging geodatabase and are processed into the NTIA geodatabase model. Fixed wireless service providers typically supply tower locations and characteristics in a standardized spreadsheet template. This information is used to calculate signal propagation models.

Middle Mile/Last Mile Infrastructure

Middle mile/last mile points are typically provided in either Shapefile or text-file format containing the necessary location and attribute information. During this submission cycle, some middle-mile infrastructure data was interpreted via data posted on provider web sites.

Community Anchor Institutions (CAI)

The CAI data were updated and enhanced through the integration of authoritative datasets from the National Center for Education Statistics, the Institute of Museums and Libraries, and the Kansas Adjutant General's Department (the steward of the State's structures geodatabase). Efforts were made to assign unique ID numbers to schools and libraries as per directions outlined by NTIA. While significant progress was made in this regard, work will continue during the upcoming off-cycle period to resolve disagreement between these databases. Using data collected through a recently conducted study entitled *Building the Broadband Future: The Communications Needs of Kansas Schools, Libraries, and Hospitals*, broadband service information (speed and transmission technology) was conflated to educational facilities where possible.

Data Review

In order to ensure that information supplied by the providers was correctly interpreted and incorporated into the database, DASC employs a variety of quality assurance methods and techniques.

1. Change detection - comparison of revised/updated boundary delineation or provider information with previous submissions. All service area updates are compared to the previous submission to determine if the change in geographic extent or attribute information is reasonable. While major revisions to a service area or technology may be accurate, appropriate follow-up measures are made with the provider to ensure that the submission materials have been provided and/or interpreted correctly.
2. Conference calls – As necessary, follow-up phone calls are made to providers to resolve issues related to submission materials. While this process is time consuming, it is also viewed as part of the relationship building process. It helps to ensure that database edits follow the intent of the provider. Additionally, the GIS technical staff has the opportunity to provide additional background on how the data is collected, aggregated, and used.
3. Interactive Web meetings – using Adobe Connect, interactive desktop GIS sessions are offered to providers as a means to verify service area definitions, transmission technology, and required edits. This is the most effective communication tool used in the data collection and editing phase of the project. DASC will continue to encourage providers to participate in these sessions. It is very efficient, allows both parties to see the map and discuss necessary edits, answer questions in real time, and most importantly, build a relationship that leads to continued participation.

Provider Web Site Research

Information including maximum advertised download and upload speed, transmission technology, and service area was harvested from provider web sites and used as a cross-reference for the broadband geodatabase. Of the provider web sites researched, 79% contained speed information, 70% contained transmission technology, and 95% contained a location reference. Some provider web sites publish a map of their service areas, while others simply list the cities or regions served. The information posted to the provider web sites serves as a valuable resource for validating the broadband geodatabase. DASC plans to refresh this information prior to each submission cycle.

Commercial Dataset Validation

The Esri Cable (MediaPrints) dataset contains boundaries for US cable systems, including areas designated as having high-speed Internet access. While the mapping methodologies and data resolutions are different between MediaPrints and the State Broadband Map (SBM), the MediaPrints dataset provides a good reference for cable technology-based service providers, and their service area. Automated and visual comparative analysis was performed to determine general agreement/disagreement between the two datasets. In cases where the spatial extent between providers agrees, confidence in the SBM is higher. In cases where the extent disagrees, it indicates a need for further research, and/or follow-up with the provider in question. The analysis performed on the most recent update obtained shows strong agreement between both identified service providers and corresponding service areas. The MediaPrints license agreement provides quarterly updates; therefore, the validation procedure described below will be performed prior to each data submission.

Cable Boundaries:

1. Filter MediaPrints dataset for 'Operates Internet = Y'.
2. Use SQL to match providers listed in the MediaPrints dataset to those contained in the SBM. Due to differences between provider names between the two datasets, this is a partially automated process.
3. Perform spatial intersect to locate areas of disagreement (for example, Internet service indicated by MediaPrints, and not by SBM).
4. Visually inspect areas of disagreement.
5. Flag areas of disagreement for follow-up research.

Fiber:

1. Query MediaPrints layer for FiberMiles > 0 and generate list of providers matching criteria.
2. Query SBM for TRANSTECH = 50 and generate list of providers matching criteria.
3. Compare lists to flag providers that have implemented fiber-based technology, but are not indicated as TRANSTECH = 50 (FTTH) in the SBM. While these providers may offer Hybrid-fiber Coaxial service, and not true FTTH, it does indicate a need for follow-up research for clarification.

Future Direction

During the coming months, the KSBI team will focus on the following initiatives to enhance the statewide geodatabase and promote effective distribution of this valuable information resource.

Enhancements to KSBI web resources:

- Development and integration of analytical reports;
- Publication of KSBI Maps Homepage and associated resources;
- Further enhancements and modifications to public web-mapping application;
- Maintenance and update of all online materials (map services, map gallery, PDF maps, etc).

Verification and validation activities:

- 3rd party dataset validation – the following are planned validation sources:
 - Esri Cable Boundaries;
 - American Roamer;
 - FCC Form-477.

CAI data enhancements:

- Refresh CAI layer with structures database updates from state data stewards;
- Continue work to bring schools and library ID numbers in agreement with national schemas.

Service provider outreach activities:

- Data Submission Webinars – these valuable sessions will be continued as an efficient way to review data requirements, discuss technical issues, and answer service provider questions regarding the data-collection process;
- Provider feedback package - upon acceptance of the October, 2013 data submission by the NTIA, the revised data will be made accessible via the interactive mapping component of the provider portal.

Appendix A – Service Provider Status Table

Provider	DBA Name	FRN	NDA	State Database Status	Reporting Period Status
AT&T Mobility LLC	AT&T Mobility LLC	4979233	Yes	Data Included in KS State Submission	Updates included this reporting period
AT&T Communications of Texas, Inc.	AT&T Southwest	16657918	Yes	Data Included in KS State Submission	Updates included this reporting period
TC Wireless, Inc.	Advantage Plus	18587469	Yes	Data Included in KS State Submission	No updates this reporting period
Allegiance Communications, LLC	Allegiance CATV	10267862	No	Data Included in KS State Submission	Updates included this reporting period
Atwood Cable Systems, Inc.	Atwood Cable Systems, Inc.	3789765	No	Data Included in KS State Submission	No updates this reporting period
Benkelman Telephone Company	BWTelcom	2387264	Yes	Data Included in KS State Submission	No updates this reporting period
Hartman Telephone Exchanges	BWTelcom	4329348	Yes	Data Included in KS State Submission	No updates this reporting period
Blue Valley Tele-Communications, Inc.	Blue Valley Tele-Communications, Inc.	2331262	Yes	Data Included in KS State Submission	No updates this reporting period
Haug Communications, Inc.	BroadBand Wireless Internet	5600242	Yes	Data Included in KS State Submission	No updates this reporting period
Benson Tel Service Inc.	Btsskynet.net	18562207	No	Data Included in KS State Submission	No updates this reporting period
Cable ONE	Cable ONE	3474327	Yes	Data Included in KS State Submission	No updates this reporting period
CenturyTel, Inc.	CenturyLink	18626853	Yes	Data Included in KS State Submission	Updates included this reporting period
City of Baxter Springs	City of Baxter Springs	7163819	No	Data Included in KS State Submission	Updates included this reporting period
City of Chanute	City of Chanute	2295400	Yes	Data Included in KS State Submission	No updates this reporting period
City of Coffeyville	City of Coffeyville	18535427	No	Data Included in KS State Submission	No updates this reporting period
Clearwire Corporation	Clear	17775628	NA	Data Included in KS State Submission	Updates included this reporting period
Cogent Communications, Inc.	Cogent Communications, Inc.	19066034	No	Data Included in KS State Submission	No updates this reporting period
Columbus Telephone Company	Columbus Telephone Company	3734167	Yes	Data Included in KS State Submission	Updates included this reporting period
Comcast Cable Communications, LLC	Comcast	4441663	Yes	Data Included in KS State Submission	Updates included this reporting period
CoxCom Inc.	Cox Communications	1524461	Yes	Data Included in KS State Submission	Updates included this reporting period
Craw-Kan Telephone Cooperative, Inc.	Craw-Kan Telephone Cooperative, Inc.	2334225	Yes	Data Included in KS State Submission	No updates this reporting period
Leap Wireless International, Inc.	Cricket Communications, Inc.	2963528	Yes	Data Included in KS State Submission	No updates this reporting period
Cunningham Communications, Inc.	Cunningham Telephone & Cable	4985818	Yes	Data Included in KS State Submission	Updates included this reporting period
Diller Telephone Company	Diller Telephone Company	2393379	Yes	Data Included in KS State Submission	No updates this reporting period
Diller Telephone Company	Diode Communications	2393379	Yes	Data Included in KS State Submission	No updates this reporting period

Provider	DBA Name	FRN	NDA	State Database Status	Reporting Period Status
Eagle Communications, Inc.	Eagle Communications, Inc.	13339973	Yes	Data Included in KS State Submission	No updates this reporting period
Elkhart Telephone Company, Inc.	Epic Touch Company, Inc.	2330843	Yes	Data Included in KS State Submission	No updates this reporting period
Bluestem Telephone Company	FairPoint Communications	3723491	Yes	Data Included in KS State Submission	Updates included this reporting period
FairPoint Missouri, Inc.	FairPoint Communications	14710388	Yes	Data Included in KS State Submission	Updates included this reporting period
Rural Link	FairPoint Communications	14710388	Yes	Data Included in KS State Submission	No updates this reporting period
Sunflower Telephone Co., Inc.	FairPoint Communications	3723236	Yes	Data Included in KS State Submission	Updates included this reporting period
WISP-Router, Inc	Family Entertainment Network	16099509	Yes	Data Included in KS State Submission	No response to recent data request
GBT Communications	GBT Communications	12141842	No	Data Included in KS State Submission	No updates this reporting period
Giant Communications, Inc.	Giant Communications	8830846	Yes	Data Included in KS State Submission	No updates this reporting period
Google Fiber Kansas LLC	Google Fiber Kansas LLC	22427892	Yes	Data Included in KS State Submission	Updates included this reporting period
Gorham Telephone Company, Inc.	Gorham Telephone Company	4322889	Yes	Data Included in KS State Submission	No updates this reporting period
H&B Cable Service, Inc.	H&B Communications, Inc.	2331601	Yes	Data Included in KS State Submission	No updates this reporting period
Haviland Telephone Company, Inc.	Haviland Telephone Company, Inc.	5081567	Yes	Data Included in KS State Submission	No updates this reporting period
Home Communications, Inc.	Home Telephone Company, Inc.	10627446	Yes	Data Included in KS State Submission	No updates this reporting period
Hughes Network Systems, LLC	Hughes Network Systems, LLC	17434911	No	Data Included in KS State Submission	Updates included this reporting period
JBN Telephone Company, Inc.	JBN Telephone Company, Inc.	4340410	Yes	Data Included in KS State Submission	No updates this reporting period
Kansas Data Internet, Inc.	KASINET	9999	No	Data Included in KS State Submission	No response to recent data request
KanOkla Communications, Inc.	KanOkla Networks	2323731	Yes	Data Included in KS State Submission	No updates this reporting period
The KanOkla Telephone Association, Inc.	KanOkla Networks	4362364	Yes	Data Included in KS State Submission	Updates included this reporting period
Kansas Broadband Internet, Inc.	Kansas Broadband Internet, Inc.	16893455	Yes	Data Included in KS State Submission	No response to recent data request
Kansas Fiber Network LLC	Kansas Fiber Network LLC	19529569	No	Data Included in KS State Submission	Updates included this reporting period
LaHarpe Telephone Company, Inc.	LaHarpe Telephone Company, Inc.	4322053	Yes	Data Included in KS State Submission	No updates this reporting period
Lawrence Freenet	Lawrence Freenet	14524193	No	Data Included in KS State Submission	Will Not Provide Data
Level 3 Communications, LLC	Level 3 Communications, LLC	3723822	No	Data Included in KS State Submission	Updates included this reporting period
Mediacom	MCC Missouri LLC	5184247	Yes	Data Included in KS State Submission	No updates this reporting period
Madison Telephone LLC	Madison Telephone LLC	4322079	No	Data Included in KS State Submission	Updates included this reporting period

Provider	DBA Name	FRN	NDA	State Database Status	Reporting Period Status
MegaPath Corporation	MegaPath Corporation	3753787	Yes	Data Included in KS State Submission	Updates included this reporting period
Mercury Wireless, LLC	Mercury Wireless, LLC	18603027	Yes	Data Included in KS State Submission	Updates included this reporting period
St. Joe Wireless	Midwest Mobile Radio Service, Inc.	2545929	Yes	Data Included in KS State Submission	No updates this reporting period
Moundridge Telephone Company, Inc.	Moundridge Telephone Company, Inc.	2339976	Yes	Data Included in KS State Submission	No updates this reporting period
LR Communications, Inc.	Mutual Telecommunications	14024640	Yes	Data Included in KS State Submission	No updates this reporting period
North Central Kansas Community Network	NCKCN	9999	Yes	Data Included in KS State Submission	No updates this reporting period
Nautilus Net	Nautilus Net	9999	No	Data Included in KS State Submission	No updates this reporting period
Nex-Tech, Inc.	Nex-Tech, Inc.	17125808	Yes	Data Included in KS State Submission	Updates included this reporting period
PAETEC Communications, Inc.	PAETEC Communications, Inc.	3744869	No	Non-Responsive	Will Not Provide Data
Peoples Telecommunications, LLC	Peoples Telecommunications, LLC	4310694	Yes	Data Included in KS State Submission	No updates this reporting period
Pioneer Telephone Association, Inc.	Pioneer Communications	2334795	Yes	Data Included in KS State Submission	No updates this reporting period
Pixius Communications LLC	Pixius Communications	19389949	No	Data Included in KS State Submission	No response to recent data request
Carson Communications	Rainbow Communications	13722	Yes	Data Included in KS State Submission	No updates this reporting period
Rainbow Telecommunications Association, Inc.	Rainbow Communications	2333649	Yes	Data Included in KS State Submission	No updates this reporting period
Rebeltec Communications LLC	Rebeltec Communications LLC	16084675	Yes	Data Included in KS State Submission	No updates this reporting period
Nex-Tech, Inc.	Rural Telephone	6192041	Yes	Data Included in KS State Submission	No updates this reporting period
Rural Telephone Service Company, Inc.	Rural Telephone	2336105	Yes	Data Included in KS State Submission	No updates this reporting period
S&A Telephone Company, Inc.	S&A Telephone Company, Inc.	2329662	Yes	Data Included in KS State Submission	Updates included this reporting period
S&T Communications LLC	S&T Communications LLC	8460081	Yes	Data Included in KS State Submission	No updates this reporting period
S&T Telephone Cooperative Association, Inc.	S&T Telephone Cooperative Association, Inc.	4310769	Yes	Data Included in KS State Submission	No updates this reporting period
South Central Telephone Assn., Inc.	SCTelcom	3771235	Yes	Data Included in KS State Submission	No updates this reporting period
South Central Wireless, Inc.	SCTelcom	3771169	Yes	Data Included in KS State Submission	No updates this reporting period
Skycasters	Skycasters	18756155	Yes	Data Included in KS State Submission	No updates this reporting period
SWKO, Inc.	SouthWest Kansas Online	20608121	No	Data Included in KS State Submission	No response to recent data request
Southeast Nebraska Communications, Inc.	Southeast Nebraska Telephone Company	6764948	Yes	Data Included in KS State Submission	No updates this reporting period
Southern Kansas Telephone Company, Inc.	Southern Kansas Telephone Company, Inc.	2333888	Yes	Data Included in KS State Submission	Updates included this reporting period

Provider	DBA Name	FRN	NDA	State Database Status	Reporting Period Status
KeyOn Communications, Inc.	SpeedNet	15082621	No	Data Included in KS State Submission	No response to recent data request
Sprint Nextel Corporation	Sprint	3774593	Yes	Data Included in KS State Submission	Updates included this reporting period
Spacenet, Inc.	Starband Communications, Inc.	5087457	No	Data Included in KS State Submission	No updates this reporting period
Stouffer Communications, Inc.	Stouffer Communications	6716666	Yes	Data Included in KS State Submission	Updates included this reporting period
Friendship Cable of Arkansas, Inc.	Suddenlink Communications	4999025	Yes	Data Included in KS State Submission	No updates this reporting period
NPG Cable, LLC	Suddenlink Communications	200399200	Yes	Data Included in KS State Submission	No updates this reporting period
W.K. Communications, Inc.	Suddenlink Communications	4999736	Yes	Data Included in KS State Submission	Updates included this reporting period
Sumner Cable TV, Inc.	Sumner Communications	7631187	Yes	Data Included in KS State Submission	Updates included this reporting period
SureWest Kansas Operations, LLC	SureWest Kansas Operations, LLC	143027194	Yes	Data Included in KS State Submission	No updates this reporting period
SwiftLink 4 State Wireless Internet LLC	SwiftLink 4 State	22218556	No	Data Included in KS State Submission	No updates this reporting period
T-Mobile USA, Inc.	T-Mobile	6945950	Yes	Data Included in KS State Submission	Updates included this reporting period
The Tri-County Telephone Association	The Tri-County Telephone Association	1630433	Yes	Data Included in KS State Submission	Updates included this reporting period
Time Warner Cable LLC	Time Warner Cable	7556251	Yes	Data Included in KS State Submission	No updates this reporting period
Totah Communications, Inc.	Totah Communications, Inc.	5010996	Yes	Data Included in KS State Submission	Updates included this reporting period
Mokan Dial, Inc.	Townes Telecommunications Services Company	4928750	Yes	Data Included in KS State Submission	No updates this reporting period
Twin Valley Communications, Inc.	Twin Valley Communications, Inc.	10059640	Yes	Data Included in KS State Submission	No updates this reporting period
Twin Valley Telephone, Inc.	Twin Valley Telephone, Inc.	2334407	Yes	Data Included in KS State Submission	No updates this reporting period
Twinmounds.com	Twinmounds.com	18333211	No	Data Included in KS State Submission	No updates this reporting period
United States Cellular Corporation	U.S. Cellular	4372322	Yes	Data Included in KS State Submission	No updates this reporting period
United Communications Association, Inc.	United Communications Association	2327153	Yes	Data Included in KS State Submission	Updates included this reporting period
United Wireless Communications, Inc.	United Wireless	12662698	Yes	Data Included in KS State Submission	No updates this reporting period
Valnet	Valnet	18198572	Yes	Data Included in KS State Submission	Updates included this reporting period
Valunet	Valunet	9999	No	Data Included in KS State Submission	Updates included this reporting period
Cellco Partnership and its Affiliated Entities	Verizon Wireless	3290673	Yes	Data Included in KS State Submission	Updates included this reporting period
ViaSat, Inc.	ViaSat Communications, Inc.	7843766	No	Data Included in KS State Submission	No updates this reporting period
Wide Open West	WOW!	20113197	Yes	Data Included in KS State Submission	No updates this reporting period

Provider	DBA Name	FRN	NDA	State Database Status	Reporting Period Status
Wamego Telecommunications Company, Inc.	Wamego Telecommunications Company, Inc.	3746088	Yes	Data Included in KS State Submission	Updates included this reporting period
Wave Wireless LLC	Wave Wireless LLC	18057257	No	Data Included in KS State Submission	No updates this reporting period
Wheat State Telephone, Inc.	Wheat State Telephone, Inc.	2333672	No	Data Included in KS State Submission	Updates included this reporting period
Wheatland Broadband Services	Wheatland Broadband	6121354	Yes	Data Included in KS State Submission	No updates this reporting period
Ideatek Systems Inc.	Wildflower Internet	16098857	Yes	Data Included in KS State Submission	No updates this reporting period
Wilson Telephone Company, Inc.	Wilson Telephone Company, Inc.	3722444	Yes	Data Included in KS State Submission	Updates included this reporting period
Zayo Group, LLC	Zayo Group, LLC	19133826	No	Data Included in KS State Submission	No updates this reporting period
Zito Midwest, LLC	Zito Media	20111225	No	Data Included in KS State Submission	No updates this reporting period